

LEGISLATIVE APPROPRIATIONS REQUEST

for Fiscal Years 2018 and 2019

**Submitted to the
Office of the Governor, Budget Division,
and the Legislative Budget Board**

by

UNIVERSITY OF HOUSTON - DOWNTOWN

*Date of Submission
August 2016*

**University of Houston – Downtown
Request for Legislative Appropriations**

Table of Contents

| | |
|---|----|
| 1.A. Administrator’s Statement | 1 |
| 1.B. Organizational Chart | 8 |
| 1.C. Certificate of Dual Submissions..... | 9 |
| 1.D. Budget Overview – Biennial Amounts | 10 |
| | |
| 2.A. Summary of Base Request by Strategy | 11 |
| 2.B. Summary of Base Request by Method of Finance | 14 |
| 2.C. Summary of Base Request by Object of Expense | 19 |
| 2.D. Summary of Base Request Objective Outcomes..... | 20 |
| 2.E. Summary of Exceptional Items Request..... | 23 |
| 2.F. Summary of Total Request by Strategy | 24 |
| 2.G. Summary of Total Request Objective Outcomes | 27 |
| | |
| 3.A. Strategy Request | |
| Operations Support | 31 |
| Staff Group Insurance Premiums | 35 |
| Workers’ Compensation Insurance | 37 |
| Texas Public Education Grants | 39 |
| E & G Space Support..... | 41 |
| Community Development..... | 43 |
| Institutional Enhancement..... | 46 |
| Comprehensive Research Fund..... | 48 |
| | |
| 3.A.1. Program-Level Request Schedule | 51 |
| | |
| 4.A. Exceptional Item Request Schedule | |
| Center for Urban Agriculture & Sustainability | 52 |
| Internships – A Pathway to Career Success | 54 |
| | |
| 4.B. Exceptional Items Strategy Allocation Schedule | |
| Center for Urban Agriculture & Sustainability | 56 |
| Internships – A Pathway to Career Success | 57 |

Table of Contents
Page 2

| | |
|--|----|
| 4.C. Exceptional Items Strategy Request | |
| Exceptional Item Request | 58 |
| 6.A. HUB Supporting Schedule | 59 |
| 6.H. Estimated Total of All Funds Outside the GAA | 61 |
| 6.I. 10% Biennial Base Reduction Options Schedule | 62 |
| Supporting Schedules | |
| Schedule 1A, Other Educational and General Income | 64 |
| Schedule 2, Selected Educational, General and Other Funds | 67 |
| Schedule 3A, Staff Group Insurance Data Elements | 68 |
| Schedule 4, Computation of OASI..... | 71 |
| Schedule 5, Calculation of Retirement Proportionality and ORP Differential | 72 |
| Schedule 6, Constitutional Capital Funding..... | 73 |
| Schedule 7, Personnel | 74 |
| Schedule 8B, Tuition Revenue Bond Issuance History | 76 |
| Schedule 9, Special Item Information | |
| Community Development | 77 |
| Institutional Enhancement..... | 79 |
| Center for Urban Agriculture & Sustainability | 80 |
| Internships – A Pathway to Career Success | 81 |

Schedules Not Included

| | | |
|---|---|-------------|
| Agency Code: | Agency Name: | Date: |
| 784 | University of Houston-Downtown | August 2016 |
| <p>For the schedules identified below, the University of Houston-Downtown either has no information to report or the schedule is not applicable. Accordingly, these schedules have been excluded from the University of Houston-Downtown Legislative Appropriations Request 2018-19 biennium.</p> | | |
| Number | Name | |
| 2.C.1. | Operating Costs Detail Base Request | |
| 3.B. | Rider Revisions and Additions Request (included in University of Houston System) | |
| 3.C. | Rider Appropriations and Unexpended Balances Request (included in University of Houston System) | |
| 5.A. - 5.E. | Capital Budget Project | |
| 6.B. | Current Biennium One-time Expenditure Schedule | |
| 6.C. | Federal Funds Supporting Schedule | |
| 6.D. | Federal Funds Tracking Schedule | |
| 6.E. | Estimated Revenue Collections Supporting Schedule | |
| 6.F. | Advisory Committee Supporting Schedule | |
| 6.G. | Homeland Security Funding Schedule | |
| 6.J. | Summary of Behavioral Health Funding | |
| 7. | Administrative and Support Costs | |
| Schedule 8 | Summary of Requests for Capital Project Financing | |
| Schedule 8A | Tuition Revenue Bond Request | |
| Schedule 8C | Revenue Capacity for Tuition Revenue Bond Projects (included in University of Houston System) | |
| Schedule 8D | Tuition Revenue Bond Request by Project (included in University of Houston System) | |

784 University of Houston - Downtown

Overview

The University of Houston-Downtown (UHD) continues to mature as an institution, growing in academic reputation, complexity, and outreach. After 40 years of operating as an open-admissions institution, UHD has been implementing admission standards for both First-Time-In-College (FTIC) and Transfer students for the past three years. Another major change has been the growth of graduate programs in the last few years. Anchored by the Master of Business Administration (MBA) program, Masters-level enrollments have increased from just over 200 students in Fall 2012 to more than 1,000 in Fall 2015. However, transfer students continue to make up two-thirds of UHD's enrollment. Given the challenge of students accumulating excess hours in transferring to UHD and of the rising indebtedness of students, UHD is taking steps to strengthen its working relationships with its community college partners, including Houston Community College and Lone Star College.

In addition, UHD is now poised to grow its physical campus, having recently acquired a long-targeted tract of land located directly adjacent to its campus in downtown Houston, on which will be constructed the Science & Technology Building that was funded during the 84th legislative session.

In recent years, most budget increases at UHD have been dedicated to enhancing student success-initiatives such as expanding the number of advisors, peer tutors, and faculty mentors, as well as adding scholarships. When the state returned to UHD its \$1.5 million B-On-Time allocation, the institution used the funds to support retention scholarships for 880 FTIC students with a requirement to complete 24 credits a year in good standing. As we enter the fall 2016 semester, 78% of the students met the requirements. This result, along with improvement in other metrics such as increases in the number of hours completed, overall GPA, and the ABC rate in gateway courses (college algebra), are indicators of the transformational changes happening at UHD to improve student success.

Adjustments Made to Comply with the 4% Baseline Cut Made to the 2016-17 Appropriation

In compliance with the policy letter issued by the Office of the Governor, Budget Division and the Legislative Budget Board, UHD has reduced by 4% its base appropriation. The 4% reduction is being applied just to an institution's existing special items plus worker's compensation. Because of this, the total biennial cut for UH-Downtown (UHD) would amount to \$226,956. With a current, unrestricted operating budget of \$137 million, a cut of this magnitude would not be considered insurmountable. However, a closer examination of UHD's operation reveals that such a cut would have a negative impact on UHD.

First, it should be noted that other than the Institutional Enhancement item, which is provided to all state universities, UHD receives very little in the way of special item funding. In fact, on a per student basis, UHD's special items appropriation is among the lowest in the state. Other institutions with multiple special items will be able to make disproportional cuts to those items in order to protect core operating funds. More than 80% of UHD's total special item funding comes through Institutional Enhancement (I/E). For all Texas public universities I/E funding is operating funds. Of the \$226,956 that UHD would have to cut, more than \$183,000 would come from the Institutional Enhancement strategy. This would only add to UHD's ongoing challenge of identifying sufficient operating funds to fulfill its mission.

In order to remain affordable to the students it serves, UHD has one of the lowest tuition rates in the state, approximately 15% below the statewide average. UHD also receives the lowest Appropriated Funds-per-FTE Student of any Texas public university, at \$3,703. As a result, UHD is significantly understaffed, with a Staff-to-Faculty ratio that is far below the state average and a Student-to-Faculty ratio that is one of the highest in the state. While UHD's 4% cut may appear minimal, its impact is significant when viewed in the context of the resources that the university needs to support underrepresented students who come to the university under-prepared to do college work. A measure of UHD's resource struggle is the fact that reallocation of existing resources has become a significant way to fund the increasing the number of advisors, faculty mentors, peer tutors and scholarships.

784 University of Houston - Downtown

University of Houston System 2018-19 Legislative Priorities

The University of Houston-Downtown legislative priorities are congruent with the UH System priorities. The university's highest priority is an increase to base formula funding. UHD appreciates the progress that the legislature has made in the last two sessions to restore formula funding to 2011 levels. The momentum that UHD has developed in the past few years in terms of improving student success would be greatly enhanced if the 85th legislature would close the remaining 11% gap. Approximately 80% of UHD's full-time students receive on average \$10,000 in scholarships, grants and loans per year, an indication of how important financial aid is to students. In FY16, 1,194 students received over \$6.5 million in Texas Grant funding. This funding allows students to work less, enroll in more classes, and graduate in a timely manner. Congruent with UHD's student success metrics, the Texas Grant requires students to earn 24 credit hours a year while remaining in good standing. UHD urges the legislature to increase funding for the Texas Grant program.

For the third consecutive year (sixth total), in 2017 UHD has been named a Military Friendly School, as one of the top universities in the nation committed to the success of service members. Over 500 veterans are enrolled at UHD. A challenge associated with serving these veterans is that since 2013, UHD's Hazlewood exemption has increased from \$958,269 to \$1,682,629 in 2016. The university asks that the state appropriate resources to cover all the exemptions that support veterans and their families, thereby lowering the burden placed on other students to cover this cost.

While we recognize the challenge that faces the legislature due to a decrease in oil and gas related revenues, we ask that UHD's 4% cut be restored. A 4% cut of \$183,000 to the university's operating budget will reduce the already insufficient number of faculty and staff needed to support student success.

These are exciting times for UHD as its multi-year plan for institutional transformation is beginning to show clear signs of success. An increase to UHD's state appropriation by the 85th legislature will greatly contribute to UHD sustaining its momentum.

Significant Changes in Policy

In recent years, UHD has seen significant changes in policy and in the way that it operates. The new admission standards, along with improved advising, cutting-edge pedagogy, and an institutional commitment to further strengthen ties with community college partners, are already beginning to move the needle on student success. The UHD Progress Card, which tracks key performance measures that are reviewed annually by the UHS Board of Regents, shows steady improvement in the First-Year Retention Rates for both Transfer students and FTICs. These improvements in retention are a precursor for improved graduation rates.

In examining student performance since the implementation of these admission standards, there has been marked improvement in several key areas. Not only are FTICs being retained at a higher rate, they are posting significantly higher GPAs in their first semester. In Fall 2012, prior to FTIC admission standards, the average GPA for an FTIC after one semester was 2.21. By Fall 2015, it had risen to 2.53. Since the implementation of admissions standards, students are attempting more hours (13.3 in Fall 2015 versus 12.3 in Fall 2012) and completing more hours (11.5 in Fall 2015 versus 9.5 in Fall 2012). During this period, the percentage of students who earned all of the hours they attempted jumped from 51 percent to 67 percent. Through course redesign and improved pedagogy, UHD students are performing better in courses that have historically been gateways to academic progress, such as Algebra I. In Fall 2012 the ABC Rate (percent of students earning an A, B, or C) for Algebra I was 54%. By Fall 2015 that ABC Rate in the redesigned Algebra I course had climbed to 69%.

While success with FTICs is vital, of equal importance is that UHD succeed with Transfer students, who comprise two-thirds of the enrollment of the university. The UHD strategic plan emphasizes the importance of developing strong alliances with our community college partners. To this end, the university has coordinated efforts to advise and guide students. UHD's most senior leaders meet regularly with their community college peers to explore ways they might advance the state's primary 60X30

Administrator's Statement

8/15/2016 6:06:40PM

85th Regular Session, Agency Submission, Version 1
Automated Budget and Evaluation System of Texas (ABEST)

784 University of Houston - Downtown

goal of having 60 percent of its 25-to-34-year-old workforce hold a postsecondary credential by 2030. With the THECB's plan placing a heavy emphasis on adult learners, UHD, with its average student being 27 years old, is well positioned to make a significant contribution.

UHD is similarly prepared to contribute to the other three goals outlined in the 60X30 plan. The second 2030 goal calls for Texas institutions to produce 550,000 students who will in that year be completing work on a degree or certificate. The 2,573 degrees and certificates awarded by UHD in 2014-15 was an all-time high and marked a 6.3% increase over the prior year. The third goal speaks to the importance of completed degree programs equipping students with identified marketable skills. UHD's mission statement underscores the institution's commitment to "providing strong academic and career preparation," and its College of Business has engaged business and industry leaders in program development to ensure that UHD business graduates enter the workforce ready to perform at a high level. Lastly, the 60X30 plan sets the goal of ensuring that by 2030, undergraduate student loan debt will not exceed 60 percent of the first year wage for graduates of Texas public universities. UHD prides itself on being among the best values in Texas public higher education. For FY2017 a student enrolling in 30 undergraduate hours at UHD will pay \$6,938, which is 13% below the FY2016 statewide average of \$7,986.

UHD is also the first institution in the state to offer a 5 year tuition guarantee, as befits our first-generation, Hispanic Serving Institution (HSI), minority serving, and veteran focus. Students taking 24 semester credit hours a year and remaining in good academic standing will be able to lock in tuition/fee rates for 15 consecutive semesters. This model better fits the UHD student profile and will ensure that students can graduate within the six years.

While UHD is evolving to become a different type of institution, in important ways it remains unchanged. Many of the students being served by UHD continue to come from groups historically underrepresented in higher education. At present, the UHD student body is 44% Hispanic, 25% African-American, 18% Anglo, and 10% Asian. More than 50% of UHD students are the first in their families to attend college. The majority work while attending school. These students require specific types of support in order to maximize the probability that they will succeed academically and ultimately earn a degree. They must be well advised, monitored through the early weeks of a new class, assisted as needed via faculty and/or peer tutoring, and mentored throughout their college careers. Many of these students may also need a strategic infusion of institutional scholarship funds to keep them on track. UHD remains committed to providing all of this needed support.

Significant Changes in Provision of Services

The changes made with admission standards are reshaping the student body at UHD in positive ways. Improved retention rates have resulted in UHD delivering a steadily increasing number of hours at the upper division level (Junior/Senior), and by raising the bar academically the university is coming to be viewed more favorably by prospective students. This is perhaps most evident at the graduate level, where UHD has seen tremendous growth over the past four years. Much of this growth has been driven by graduate certificates that the faculty in the College of Business developed with representatives from Houston corporations. These certificates, along with new Masters degrees in Non-Profit Management and Data Analytics, have increased the percentage of graduate SCHs from less than 1% in the Fall of 2012 to 4% in 2015.

While this growth at the graduate level is encouraging, UHD is and will remain an institution committed to undergraduate instruction. To enhance student success at the undergraduate level, UHD has taken numerous actions. Student advising has been strengthened considerably over the past five years, with 15 new advisor positions added and an expanded, technology-enabled Advising Center constructed in the core of the campus. The university also developed a Center for Teaching and Learning Excellence (CTLE) as a resource for faculty. Faculty work with the Center's staff to redesign courses so as to make them more effective for the learning needs of UHD students. UHD has also adopted best practices for improving retention, including placing cohorts of students into linked classes, and using student/peer instructors to supplement the work of the faculty in several of the courses that have been identified as gateways to academic progress.

Administrator's Statement

8/15/2016 6:06:40PM

85th Regular Session, Agency Submission, Version 1
Automated Budget and Evaluation System of Texas (ABEST)

784 University of Houston - Downtown

In Summer 2016, UHD radically revised its Orientation programs for both FTICs and Transfer students. Moving away from the one-day, mix-and-match sessions of the past, UHD moved to a college-specific, full week Orientation program that brought incoming students into contact with all aspects of the university experience. This included time spent in mock classes, sessions on the study habits needed for success at the university level, tours of the library and computer labs to familiarize students with the academic resources at their disposal, as well as intensive advising and deliberate class registration to ensure that all hours taken would count towards the student's chosen major. This new Orientation program, titled 'Gator Gateway' was extremely well attended and well received.

Strengthening its partnerships with area community colleges continues to be a priority for UHD. Over the past 10 years the number of students transferring to UHD from community colleges has increased by over 50 percent. The university now embeds advisors at these 2-year schools, where they are able to work closely with their community college peers to ensure the best possible experience for the many students who are choosing the 2+2 option. Students who are jointly advised are much more likely to enroll in courses that not only satisfy their certificate or associate degree requirements, but are also transferrable to UHD and applicable to their pursuit of a baccalaureate degree. UHD and partners like Houston Community College (HCC) and Lone Star College (LSC) now offer 2+2 students a variety of AA/BA, AS/BS, and AAS/BAAS tracks. As a result of this collaboration, UHD and its community college partners are able to reduce the total number of earned hours for students who transfer in and graduate, thereby reducing the time-to-degree for those students and keeping to a minimum the amount of student loan debt that might be incurred.

UHD continues to be a university that meets students where they are. Serving many adult and working students, this means providing instruction that can fit busy schedules. UHD offers face-to-face instruction at several remote locations around Houston, including UHD Northwest, located at Lone Star College's University Park campus. Fall 2015 face-to-face (F2F) enrollment at this site increased by 14% over the previous year. UHD's area of greatest growth continues to be in on-line and hybrid instruction. In Fall 2015, on-line courses accounted for 26% of all UHD hours, while hybrid courses, which are a mixture of F2F and on-line, accounted for another 11 percent.

As the University continues to mature and evolve, it is critical that facilities and infrastructure keep pace. In Fall 2015, UHD opened its newest building, the Girard Street Building (GSB). The GSB is built on a podium of three levels of garage, replacing spaces lost with the demolition of an aging garage previously in that location. In addition, the GSB provides new state-of-the-art space for numerous important student services functions, including the Admissions Office, Testing Services, Disability Services, and Veterans Services. On the west end of the GSB is UHD's new Welcome Center. The Welcome Center, with its striking views of downtown Houston, provides programming space for Orientation and community events and serves as a much-needed 'front door' for prospective students and other visitors coming to campus.

UHD is now working to construct a new Science and Technology (S&T) Building, made possible by the tuition revenue bonds approved by the legislature during the 84th session. A long-sought 17 acre parcel was acquired in the spring of this year. This parcel nearly doubles the total land holdings of UHD, providing an ideal location for the new S&T Building and the expanded footprint needed to support the institution's Facilities Master Plan. UHD is in the final stages of selecting a design/build team for the S&T Building, which is expected to be completed by the summer of 2019.

Significant Externalities

The State's increased emphasis on student success, when combined with the fact that legislative funding for higher education is still below 2011 levels, has presented major challenges for the University of Houston-Downtown. The university's decision to adopt a minimal admission standards in 2013 was driven in part by legislative actions such as the scaling back or elimination of funding for developmental course work, repeated courses, and hours in excess of the state's undergraduate cap on hours attempted by students. Further, as we enter this 85th legislative session there remains considerable support to at least partially fund higher education institutions on a performance basis, with future funding tied to measures of student success. UHD is encouraged that the Texas Higher Education Coordinating Board's proposed

784 University of Houston - Downtown

performance based model recognizes the importance of having simple and clear metrics, such as increases in the total number of degrees awarded, and that many universities in the state that are serving underrepresented and underprepared students require additional funding for student support initiatives not funded in the traditional I&O formula. Such funding would allow UHD to move forward on its highest priority, student success, and in so doing better align itself with the Coordinating Board's 60X30 goals.

Like most institutions, UHD is increasingly concerned about student indebtedness. As the cost of attending college continues to rise, access to financial aid takes on ever-growing importance. Most financial aid comes through the federal government, and for low-income students the Pell Grant program is the lifeline to higher education. In 2012-13 the Department of Education put in place new Pell Lifetime Eligibility Usage (Pell LEU) rules, reducing the maximum eligibility for Pell from 18 semesters to 12. This change made it all the more critical that students pursue their degrees in a timely manner. UHD, which serves many first-generation college students, had a number of students who were impacted by this change. In 2013-14, the year after this change was made, UHD's mix of federal financial aid was 35% Pell Grants and 65% student loans. Just two years later those figures had shifted to 31% Pell and 69% loans. Putting that in dollar terms, this meant \$2 million less in Pell grants and \$5.5 million more in loans for UHD students.

While UHD has a long history of maintaining affordability, in the battle against student debt, low tuition and fee rates alone are not enough. The keys to reducing student indebtedness, beyond offering reasonable rates, are to minimize the number of hours a student takes that are beyond what is needed for their degree, and to increase students' overall financial literacy. With FTIC students, it is critical that they declare their major as early as possible, so that they can be well-advised and placed on a guided pathway to their degree. For Transfer students, it is important to minimize the number of surplus credit hours that they bring with them from other institutions. For students who are starting their college career at a community college with plans to eventually transfer to a 4-year school, their level of indebtedness, like their level of academic success, depends on UHD and the community college working together to create clear pathways from the associate degree to the bachelor's degree, and jointly advising these students.

Purpose of New Funding Being Requested

UHD opens its request for new funding by asking the legislature to restore funding for the Instruction and Operations (I&O) formula to the 2010-11 rate. For that biennium, the base SCH rate for the I&O formula was \$62.19/SCH. Due to temporary stimulus funding received through the American Recovery and Reinvestment Act (ARRA) of 2009, the full impact of the Great Recession was not felt in the Texas higher education formulas until the 2012-2013 biennium, when the base SCH rate was reduced to \$53.71/SCH. By the 2016-2017 biennium this rate had been increased to just \$55.39/SCH, still 11% below the base funding that had been provided three sessions ago. In addition to its request for increased formula funding, UHD is also asking for an increase to the Texas Grant funds and for relief to cover Hazlewood exemptions and the state's 4% cut. UHD is also requesting funding for two exceptional items.

Center for Urban Agriculture & Sustainability (\$600,000 for the biennium)

The Center for Urban Agriculture & Sustainability (CUAS) was established in 2015 with institutional and private funding. The mission of the CUAS is to create and support sustainable neighborhoods throughout Houston by engaging UHD and the external community in teaching, research and professional development and promoting best practices in business, technology, science and engagement. UHD requests exceptional item funding to expand CUAS through the construction of a greenhouse and outside agricultural laboratory. This greenhouse/lab will be placed on land that will be adjacent to the new Science & Technology Building, a project funded during the last session that is now getting underway. Included in this request is funding for a staff position to help support and expand the current initiatives led by faculty. UHD is requesting \$375,000 in FY2018 and \$225,000 in FY2019, for a biennial total of \$600,000.

784 University of Houston - Downtown

Internships – A Pathway to Career Success (\$700,000 for the biennium)

In spring 2015, the Center for Community Engagement and Service Learning (CCESL) was established with institutional funding and private philanthropy. The mission of the CCESL is to connect the university to the community by cultivating local and regional relationships with non-profit organizations, government agencies, businesses, and individuals, thus enhancing student learning, developing responsible citizenship, and serving the community. Recognizing UHD's excellence in this area, in 2015 the Carnegie Foundation designated UHD with its coveted Community Engagement Classification. UHD was the only institution in Houston and one of only five institutions in Texas to earn this designation.

UHD requests funding to provide summer stipends for students pursuing internships in their junior and senior year with non-profit organizations, which are hard-pressed to attract students due to their inability to provide paid internships. This item also recognizes that for minority students, like those served by UHD, taking an unpaid internship is often not an option due to their financial obligations. Through this request, UHD is seeking to enhance career exploration pathways by proposing stipends to support 8-week summer internships (20hr/week). To qualify for this stipend, students would be required to take 6 credit hours in the summer, allowing them to stay on track to graduate in a timely manner while obtaining valuable work experience. Summarizing, this internship initiative will help students build their careers and at the same time enhance the non-profit workforce in the Greater Houston Metropolitan area. UHD is requesting \$300,000 for FY2018 to support internships for 75 students and an additional \$400,000 in FY2019 to support internships for 100 students.

Proposed 10% Biennial Base Reduction

An additional 10% reduction of UHD's GR-related base budget would cut its 2018-19 appropriation by \$544,696. This amount combined with the 4% cut would total \$771,652 over the biennium. In effect, this would have the state taking back 17% of the \$4.4 million of new general revenue appropriated to UHD for the 2016-17 biennium. Because UHD has only two special items, \$622,451 of the \$771,652 will come from Institutional Enhancement funds. As is the case with the 4% cut, UHD uses Institutional Enhancement to fund general operations, not unlike the way it uses its I&O funding. Since personnel makes up two-thirds of the university's operational budget, a 10% reduction would almost inevitably require the elimination of full-time faculty and staff positions. Students would face problems with course availability, and departments would have to hire part-time adjuncts to replace permanent faculty. In other words, the likelihood of students earning a degree in a timely manner would be diminished. Campuses with substantial endowments and more advantaged student bodies can ameliorate such cuts; these rollbacks would cut into UHD sinew.

Conclusion

As UH-Downtown prepares for the 2018-2019 biennium, it is truly a university in transition. Its priority of increasing the number of students who graduate with certificates and degrees aligns with the state's 60X30 goal of doubling by 2030 the number of Texans ages 24-35 with postsecondary credentials or degrees. As mentioned above, in 2015 UHD increased the number of degrees and certificates it awarded by 6.3%. At that rate by 2030, UHD will also double the number of academic credentials it awards. In order to achieve this benchmark, UHD, in accord with the 60X30 plan, will continue to work with business, industry, educational and governmental agencies to create curricula and programs that develop students' marketable skills. In terms of the 60X30 plan to limit student debt, UHD will sustain its track record of affordable tuition and fees as well as its effort to decrease the excess semester credit hours that students attempt when completing an associate and bachelor's degree.

UH-Downtown is very grateful to the 84th legislature that significantly increased its state appropriations. Not only was its base funding increased, but its Higher Education Assistance Fund (HEAF) allocation was increased by 50%, and it was awarded a \$60 million Capital Construction Bond (CCB) to construct a Science &

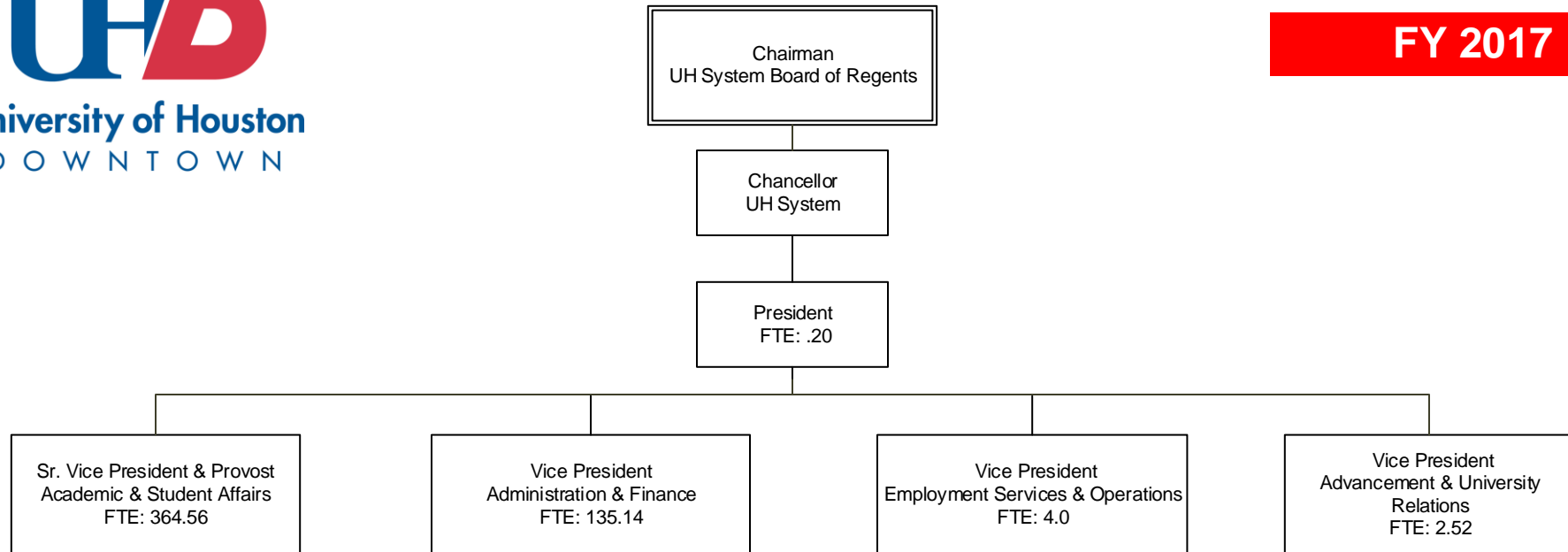
Administrator's Statement

8/15/2016 6:06:40PM

85th Regular Session, Agency Submission, Version 1
Automated Budget and Evaluation System of Texas (ABEST)

784 University of Houston - Downtown

Technology building. These additional resources are vital to the continued growth and development of the university. With continued legislative support, especially with such items as base formula funding, Texas Grants, and Hazlewood exemptions, UHD will continue to serve the diverse population of the state of Texas in achieving their academic and career goals.



Legend:

FTE figures reflect UHD employees budgeted on state funds for FY17.



CERTIFICATE

Agency Name University of Houston-Downtown

This is to certify that the information contained in the agency Legislative Appropriation Request filed with the Legislative Budget Board (LBB) and the Office of the Governor, Budget Division, is accurate to the best of my knowledge and that the electronic submission to the LBB via the Automated Budget and Evaluation System of Texas (ABEST) and the PDF file submitted via the LBB Document Submission application are identical.

Additionally, should it become likely at any time that unexpended balances will accrue for any account, the LBB and the Governor's office will be notified in writing in accordance with Article IX, Section 7.01 (2016-17 GAA).

Chief Executive Officer or Presiding Judge

Handwritten signature of Dr. Michael Olivas in black ink.

Signature

Dr. Michael Olivas

Printed Name

Interim President

Title

Date

7/19/2016

Board or Commission Chair

Handwritten signature of Tilman J. Fertitta in black ink.

Signature

Tilman J. Fertitta

Printed Name

Chairman, UH System Board of Regents

Title

Date

8/9/16

Chief Financial Officer

Handwritten signature of David M. Bradley in black ink.

Signature

David M. Bradley

Printed Name

Vice President for Administration and Finance

Title

Date

7/14/16

Budget Overview - Biennial Amounts
85th Regular Session, Agency Submission, Version 1
Automated Budget and Evaluation System of Texas (ABEST)

| 784 University of Houston - Downtown | | | | | | | | | | | |
|--|-----------------------|------------------|-------------------|------------------|---------------|---------|---------------|---------------|-------------------|-------------------|------------------------------|
| Appropriation Years: 2018-19 | | | | | | | | | | | |
| | GENERAL REVENUE FUNDS | | GR DEDICATED | | FEDERAL FUNDS | | OTHER FUNDS | | ALL FUNDS | | EXCEPTIONAL ITEM FUNDS |
| | 2016-17 | 2018-19 | 2016-17 | 2018-19 | 2016-17 | 2018-19 | 2016-17 | 2018-19 | 2016-17 | 2018-19 | 2018-19 |
| Goal: 1. Provide Instructional and Operations Support | | | | | | | | | | | |
| 1.1.1. Operations Support | 42,788,912 | | 27,646,217 | | | | | | 70,435,129 | | |
| 1.1.3. Staff Group Insurance Premiums | | | 3,336,875 | 3,732,107 | | | | | 3,336,875 | 3,732,107 | |
| 1.1.4. Workers' Compensation Insurance | 78,169 | 289,928 | 47,931 | | | | | | 126,100 | 289,928 | |
| 1.1.6. Texas Public Education Grants | | | 4,417,839 | 4,482,037 | | | | | 4,417,839 | 4,482,037 | |
| Total, Goal | 42,867,081 | 289,928 | 35,448,862 | 8,214,144 | | | | | 78,315,943 | 8,504,072 | |
| Goal: 2. Provide Infrastructure Support | | | | | | | | | | | |
| 2.1.1. E&G Space Support | 4,018,292 | | | | | | | | 4,018,292 | | |
| Total, Goal | 4,018,292 | | | | | | | | 4,018,292 | | |
| Goal: 3. Provide Special Item Support | | | | | | | | | | | |
| 3.3.1. Community Development Project | 795,062 | 763,260 | | | | | | | 795,062 | 763,260 | |
| 3.4.1. Institutional Enhancement | | 4,393,772 | | | | | 16,372 | 16,372 | 16,372 | 4,410,144 | |
| 3.5.1. Exceptonal Item Request | | | | | | | | | | | 1,300,000 |
| Total, Goal | 795,062 | 5,157,032 | | | | | 16,372 | 16,372 | 811,434 | 5,173,404 | 1,300,000 |
| Goal: 6. Research Funds | | | | | | | | | | | |
| 6.3.1. Comprehensive Research Fund | 333,582 | | | | | | | | 333,582 | | |
| Total, Goal | 333,582 | | | | | | | | 333,582 | | |
| Total, Agency | 48,014,017 | 5,446,960 | 35,448,862 | 8,214,144 | | | 16,372 | 16,372 | 83,479,251 | 13,677,476 | 1,300,000 |
| Total FTEs | | | | | | | | | 506.4 | 518.4 | 23.5 |

2.A. Summary of Base Request by Strategy

8/15/2016 2:23:40PM

85th Regular Session, Agency Submission, Version 1

Automated Budget and Evaluation System of Texas (ABEST)

784 University of Houston - Downtown

| Goal / Objective / STRATEGY | Exp 2015 | Est 2016 | Bud 2017 | Req 2018 | Req 2019 |
|--|---------------------|---------------------|---------------------|--------------------|--------------------|
| 1 Provide Instructional and Operations Support | | | | | |
| 1 <i>Provide Instructional and Operations Support</i> | | | | | |
| 1 OPERATIONS SUPPORT (1) | 32,863,237 | 34,831,564 | 35,603,565 | 0 | 0 |
| 3 STAFF GROUP INSURANCE PREMIUMS | 1,618,750 | 1,651,875 | 1,685,000 | 1,802,950 | 1,929,157 |
| 4 WORKERS' COMPENSATION INSURANCE | 57,199 | 61,100 | 65,000 | 144,964 | 144,964 |
| 6 TEXAS PUBLIC EDUCATION GRANTS | 2,312,720 | 2,242,515 | 2,175,324 | 2,218,830 | 2,263,207 |
| TOTAL, GOAL 1 | \$36,851,906 | \$38,787,054 | \$39,528,889 | \$4,166,744 | \$4,337,328 |
| 2 Provide Infrastructure Support | | | | | |
| 1 <i>Provide Operation and Maintenance of E&G Space</i> | | | | | |
| 1 E&G SPACE SUPPORT (1) | 1,817,978 | 1,869,351 | 2,148,941 | 0 | 0 |
| TOTAL, GOAL 2 | \$1,817,978 | \$1,869,351 | \$2,148,941 | \$0 | \$0 |
| 3 Provide Special Item Support | | | | | |
| 3 <i>Public Service Special Item Support</i> | | | | | |

(1) - Formula funded strategies are not requested in 2018-19 because amounts are not determined by institutions.

2.A. Summary of Base Request by Strategy

8/15/2016 2:23:40PM

85th Regular Session, Agency Submission, Version 1

Automated Budget and Evaluation System of Texas (ABEST)

784 University of Houston - Downtown

| Goal / Objective / STRATEGY | Exp 2015 | Est 2016 | Bud 2017 | Req 2018 | Req 2019 |
|---|---------------------|---------------------|---------------------|--------------------|--------------------|
| 1 COMMUNITY DEVELOPMENT PROJECT | 392,810 | 397,531 | 397,531 | 381,630 | 381,630 |
| <u>4</u> <i>Institutional Support Special Item Support</i> | | | | | |
| 1 INSTITUTIONAL ENHANCEMENT | 0 | 8,186 | 8,186 | 2,205,072 | 2,205,072 |
| <u>5</u> <i>Exceptional Item Request</i> | | | | | |
| 1 EXCEPTONAL ITEM REQUEST | 0 | 0 | 0 | 0 | 0 |
| TOTAL, GOAL 3 | \$392,810 | \$405,717 | \$405,717 | \$2,586,702 | \$2,586,702 |
| <u>6</u> <i>Research Funds</i> | | | | | |
| <u>3</u> <i>Comprehensive Research Fund</i> | | | | | |
| 1 COMPREHENSIVE RESEARCH FUND | 133,343 | 166,791 | 166,791 | 0 | 0 |
| TOTAL, GOAL 6 | \$133,343 | \$166,791 | \$166,791 | \$0 | \$0 |
| TOTAL, AGENCY STRATEGY REQUEST | \$39,196,037 | \$41,228,913 | \$42,250,338 | \$6,753,446 | \$6,924,030 |
| TOTAL, AGENCY RIDER APPROPRIATIONS REQUEST* | | | | \$0 | \$0 |
| GRAND TOTAL, AGENCY REQUEST | \$39,196,037 | \$41,228,913 | \$42,250,338 | \$6,753,446 | \$6,924,030 |

2.A. Summary of Base Request by Strategy

8/15/2016 2:23:40PM

85th Regular Session, Agency Submission, Version 1

Automated Budget and Evaluation System of Texas (ABEST)

784 University of Houston - Downtown

| Goal / Objective / STRATEGY | Exp 2015 | Est 2016 | Bud 2017 | Req 2018 | Req 2019 |
|---|---------------------|---------------------|---------------------|--------------------|--------------------|
| <u>METHOD OF FINANCING:</u> | | | | | |
| General Revenue Funds: | | | | | |
| 1 General Revenue Fund | 21,798,868 | 23,988,982 | 24,025,035 | 2,723,480 | 2,723,480 |
| SUBTOTAL | \$21,798,868 | \$23,988,982 | \$24,025,035 | \$2,723,480 | \$2,723,480 |
| General Revenue Dedicated Funds: | | | | | |
| 704 Bd Authorized Tuition Inc | 509,896 | 730,485 | 951,073 | 0 | 0 |
| 770 Est Oth Educ & Gen Inco | 16,887,273 | 16,501,260 | 17,266,044 | 4,021,780 | 4,192,364 |
| SUBTOTAL | \$17,397,169 | \$17,231,745 | \$18,217,117 | \$4,021,780 | \$4,192,364 |
| Other Funds: | | | | | |
| 802 License Plate Trust Fund No. 0802 | 0 | 8,186 | 8,186 | 8,186 | 8,186 |
| SUBTOTAL | \$0 | \$8,186 | \$8,186 | \$8,186 | \$8,186 |
| TOTAL, METHOD OF FINANCING | \$39,196,037 | \$41,228,913 | \$42,250,338 | \$6,753,446 | \$6,924,030 |

*Rider appropriations for the historical years are included in the strategy amounts.

2.B. Summary of Base Request by Method of Finance

8/15/2016 2:23:41PM

85th Regular Session, Agency Submission, Version 1

Automated Budget and Evaluation System of Texas (ABEST)

| Agency code: 784 | | Agency name: University of Houston - Downtown | | | | |
|---|-----------------------------|--|---------------------|---------------------|--------------------|--------------------|
| METHOD OF FINANCING | | Exp 2015 | Est 2016 | Bud 2017 | Req 2018 | Req 2019 |
| <u>GENERAL REVENUE</u> | | | | | | |
| <u>1</u> General Revenue Fund | | | | | | |
| REGULAR APPROPRIATIONS | | | | | | |
| Regular Appropriations from MOF Table (2014-15 GAA) | | | | | | |
| | | \$21,798,868 | \$0 | \$0 | \$0 | \$0 |
| Regular Appropriations from MOF Table (2016-17 GAA) | | | | | | |
| | | \$0 | \$23,988,982 | \$24,025,035 | \$0 | \$0 |
| Regular Appropriations (2018-19) | | | | | | |
| | | \$0 | \$0 | \$0 | \$2,723,480 | \$2,723,480 |
| TOTAL, | General Revenue Fund | \$21,798,868 | \$23,988,982 | \$24,025,035 | \$2,723,480 | \$2,723,480 |
| TOTAL, ALL | GENERAL REVENUE | \$21,798,868 | \$23,988,982 | \$24,025,035 | \$2,723,480 | \$2,723,480 |

GENERAL REVENUE FUND - DEDICATED**704** GR Dedicated - Estimated Board Authorized Tuition Increases Account No. 704

REGULAR APPROPRIATIONS

Regular Appropriations from MOF Table (2014-15 GAA)

| | | | | |
|----------|-----|-----|-----|-----|
| \$79,638 | \$0 | \$0 | \$0 | \$0 |
|----------|-----|-----|-----|-----|

2.B. Summary of Base Request by Method of Finance
85th Regular Session, Agency Submission, Version 1
Automated Budget and Evaluation System of Texas (ABEST)

8/15/2016 2:23:41PM

| Agency code: 784 | | Agency name: University of Houston - Downtown | | | | |
|--|--|---|------------------|------------------|------------|------------|
| METHOD OF FINANCING | | Exp 2015 | Est 2016 | Bud 2017 | Req 2018 | Req 2019 |
| <u>GENERAL REVENUE FUND - DEDICATED</u> | | | | | | |
| Regular Appropriations from MOF Table (2016-17 GAA) | | | | | | |
| | | \$0 | \$161,450 | \$161,450 | \$0 | \$0 |
| <i>BASE ADJUSTMENT</i> | | | | | | |
| Adjustment-Revised Receipts | | | | | | |
| | | \$430,258 | \$569,035 | \$789,623 | \$0 | \$0 |
| Comments: The primary reason for the increase in Board Authorized Tuition revenue is due to the significant growth of the MBA program at UHD. | | | | | | |
| TOTAL, | GR Dedicated - Estimated Board Authorized Tuition Increases Account No. 704 | \$509,896 | \$730,485 | \$951,073 | \$0 | \$0 |
| <u>770</u> | GR Dedicated - Estimated Other Educational and General Income Account No. 770 | | | | | |
| <i>REGULAR APPROPRIATIONS</i> | | | | | | |
| Regular Appropriations from MOF Table (2014-15 GAA) | | | | | | |
| | | \$16,943,317 | \$0 | \$0 | \$0 | \$0 |
| Regular Appropriations from MOF Table (2016-17 GAA) | | | | | | |
| | | \$0 | \$17,005,560 | \$17,113,668 | \$0 | \$0 |
| Regular Appropriations (2018-19) | | | | | | |

2.B. Summary of Base Request by Method of Finance
85th Regular Session, Agency Submission, Version 1
Automated Budget and Evaluation System of Texas (ABEST)

8/15/2016 2:23:41PM

| Agency code: 784 | | Agency name: University of Houston - Downtown | | | | |
|--|--|--|---------------------|---------------------|--------------------|--------------------|
| METHOD OF FINANCING | | Exp 2015 | Est 2016 | Bud 2017 | Req 2018 | Req 2019 |
| <u>GENERAL REVENUE FUND - DEDICATED</u> | | \$0 | \$0 | \$0 | \$4,021,780 | \$4,192,364 |
| <i>BASE ADJUSTMENT</i> | | | | | | |
| Adjustment-Revised Receipts | | \$509,956 | \$(504,300) | \$152,376 | \$0 | \$0 |
| Adjustment to Expended | | \$(566,000) | \$0 | \$0 | \$0 | \$0 |
| TOTAL, | GR Dedicated - Estimated Other Educational and General Income Account No. 770 | \$16,887,273 | \$16,501,260 | \$17,266,044 | \$4,021,780 | \$4,192,364 |
| TOTAL GENERAL REVENUE FUND - DEDICATED - 704, 708 & 770 | | \$17,397,169 | \$17,231,745 | \$18,217,117 | \$4,021,780 | \$4,192,364 |
| TOTAL, ALL | GENERAL REVENUE FUND - DEDICATED | \$17,397,169 | \$17,231,745 | \$18,217,117 | \$4,021,780 | \$4,192,364 |
| TOTAL, | GR & GR-DEDICATED FUNDS | \$39,196,037 | \$41,220,727 | \$42,242,152 | \$6,745,260 | \$6,915,844 |
| <u>OTHER FUNDS</u> | | | | | | |
| <u>802</u> | License Plate Trust Fund Account No. 0802 | | | | | |
| <i>REGULAR APPROPRIATIONS</i> | | | | | | |

2.B. Summary of Base Request by Method of Finance

8/15/2016 2:23:41PM

85th Regular Session, Agency Submission, Version 1

Automated Budget and Evaluation System of Texas (ABEST)

| | | | | | | |
|---|---|--------------|----------------------------------|--------------|-------------|-------------|
| Agency code: | 784 | Agency name: | University of Houston - Downtown | | | |
| METHOD OF FINANCING | | Exp 2015 | Est 2016 | Bud 2017 | Req 2018 | Req 2019 |
| <u>OTHER FUNDS</u> | | | | | | |
| Regular Appropriations from MOF Table (2016-17 GAA) | | \$0 | \$0 | \$0 | \$0 | \$0 |
| Regular Appropriations (2018-19) | | \$0 | \$0 | \$0 | \$8,186 | \$8,186 |
| <i>RIDER APPROPRIATION</i> | | | | | | |
| Art III, Sec. 60, Special Provisions Higher Education, Texas Collegiate License Plate Scholarships, (| | \$0 | \$8,186 | \$8,186 | \$0 | \$0 |
| TOTAL, | License Plate Trust Fund Account No. 0802 | \$0 | \$8,186 | \$8,186 | \$8,186 | \$8,186 |
| TOTAL, ALL | OTHER FUNDS | \$0 | \$8,186 | \$8,186 | \$8,186 | \$8,186 |
| GRAND TOTAL | | \$39,196,037 | \$41,228,913 | \$42,250,338 | \$6,753,446 | \$6,924,030 |

2.B. Summary of Base Request by Method of Finance

8/15/2016 2:23:41PM

85th Regular Session, Agency Submission, Version 1

Automated Budget and Evaluation System of Texas (ABEST)

| Agency code: 784 | Agency name: University of Houston - Downtown | | | | |
|---|--|-----------------|-----------------|-----------------|-----------------|
| METHOD OF FINANCING | Exp 2015 | Est 2016 | Bud 2017 | Req 2018 | Req 2019 |
| FULL-TIME-EQUIVALENT POSITIONS | | | | | |
| REGULAR APPROPRIATIONS | | | | | |
| Regular Appropriations from MOF Table (2014-15 GAA) | 462.9 | 0.0 | 0.0 | 0.0 | 0.0 |
| Regular Appropriations from MOF Table (2016-17 GAA) | 0.0 | 433.7 | 433.7 | 0.0 | 0.0 |
| Regular Appropriations (2018-19) | 0.0 | 0.0 | 0.0 | 512.4 | 518.4 |
| RIDER APPROPRIATION | | | | | |
| Art IX, Sec 6.10(a)(2), Board or Administrator FTE Adjustment (2016-17 GAA) | 0.0 | 43.4 | 43.4 | 0.0 | 0.0 |
| UNAUTHORIZED NUMBER OVER (BELOW) CAP | | | | | |
| Unauthorized Number Over (Below) Cap | (9.8) | 14.5 | 29.3 | 0.0 | 0.0 |
| TOTAL, ADJUSTED FTES | 453.1 | 491.6 | 506.4 | 512.4 | 518.4 |
| NUMBER OF 100% FEDERALLY FUNDED FTES | | | | | |

2.C. Summary of Base Request by Object of Expense

8/15/2016 2:23:41PM

85th Regular Session, Agency Submission, Version 1
Automated Budget and Evaluation System of Texas (ABEST)**784 University of Houston - Downtown**

| OBJECT OF EXPENSE | Exp 2015 | Est 2016 | Bud 2017 | BL 2018 | BL 2019 |
|-------------------------------------|---------------------|---------------------|---------------------|--------------------|--------------------|
| 1001 SALARIES AND WAGES | \$11,053,392 | \$12,216,793 | \$13,109,398 | \$2,196,886 | \$2,196,886 |
| 1002 OTHER PERSONNEL COSTS | \$407,093 | \$287,186 | \$291,851 | \$0 | \$0 |
| 1005 FACULTY SALARIES | \$23,287,998 | \$24,363,283 | \$24,518,048 | \$0 | \$0 |
| 2001 PROFESSIONAL FEES AND SERVICES | \$898 | \$0 | \$0 | \$0 | \$0 |
| 2003 CONSUMABLE SUPPLIES | \$18,865 | \$0 | \$0 | \$0 | \$0 |
| 2004 UTILITIES | \$39,569 | \$0 | \$0 | \$0 | \$0 |
| 2009 OTHER OPERATING EXPENSE | \$4,020,214 | \$3,964,120 | \$3,933,510 | \$4,174,930 | \$4,345,514 |
| 3001 CLIENT SERVICES | \$5,100 | \$0 | \$0 | \$0 | \$0 |
| 4000 GRANTS | \$362,908 | \$397,531 | \$397,531 | \$381,630 | \$381,630 |
| OOE Total (Excluding Riders) | \$39,196,037 | \$41,228,913 | \$42,250,338 | \$6,753,446 | \$6,924,030 |
| OOE Total (Riders) | | | | | |
| Grand Total | \$39,196,037 | \$41,228,913 | \$42,250,338 | \$6,753,446 | \$6,924,030 |

2.D. Summary of Base Request Objective Outcomes
85th Regular Session, Agency Submission, Version 1
Automated Budget and Evaluation system of Texas (ABEST)

8/15/2016 2:23:42PM

| 784 University of Houston - Downtown | | | | | |
|---|-----------------|-----------------|-----------------|----------------|----------------|
| Goal/ Objective / Outcome | Exp 2015 | Est 2016 | Bud 2017 | BL 2018 | BL 2019 |
| 1 Provide Instructional and Operations Support | | | | | |
| 1 Provide Instructional and Operations Support | | | | | |
| KEY 1 % 1st-time, Full-time, Degree-seeking Frsh Earn Degree in 6 Yrs | | | | | |
| | 13.30% | 15.30% | 19.77% | 22.11% | 24.98% |
| 2 % 1st-time, Full-time, Degree-seeking White Frsh Earn Degree in 6 Yrs | | | | | |
| | 11.27% | 13.73% | 16.76% | 18.76% | 20.76% |
| 3 % 1st-time, Full-time, Degree-seeking Hisp Frsh Earn Degree in 6 Yrs | | | | | |
| | 15.41% | 16.90% | 21.67% | 23.67% | 26.67% |
| 4 % 1st-time, Full-time, Degree-seeking Black Frsh Earn Degree in 6 Yrs | | | | | |
| | 10.43% | 11.87% | 16.92% | 18.92% | 20.92% |
| 5 % 1st-time, Full-time, Degree-seeking Other Frshmn Earn Deg in 6 Yrs | | | | | |
| | 13.93% | 16.42% | 19.67% | 21.67% | 24.17% |
| KEY 6 % 1st-time, Full-time, Degree-seeking Frsh Earn Degree in 4 Yrs | | | | | |
| | 3.37% | 3.89% | 4.19% | 4.43% | 4.69% |
| 7 % 1st-time, Full-time, Degree-seeking White Frsh Earn Degree in 4 Yrs | | | | | |
| | 6.54% | 1.22% | 4.56% | 4.81% | 5.06% |
| 8 % 1st-time, Full-time, Degree-seeking Hisp Frsh Earn Degree in 4 Yrs | | | | | |
| | 2.46% | 4.90% | 4.00% | 4.25% | 4.50% |
| 9 % 1st-time, Full-time, Degree-seeking Black Frsh Earn Degree in 4 Yrs | | | | | |
| | 2.91% | 3.00% | 4.00% | 4.25% | 4.50% |
| 10 % 1st-time, Full-time, Degree-seeking Other Frsh Earn Degree in 4 Yrs | | | | | |
| | 4.96% | 4.59% | 5.04% | 5.29% | 5.54% |
| KEY 11 Persistence Rate 1st-time, Full-time, Degree-seeking Frsh after 1 Yr | | | | | |
| | 66.41% | 68.62% | 69.80% | 71.55% | 73.30% |
| 12 Persistence 1st-time, Full-time, Degree-seeking White Frsh after 1 Yr | | | | | |
| | 50.00% | 51.75% | 53.50% | 55.25% | 57.00% |

2.D. Summary of Base Request Objective Outcomes
85th Regular Session, Agency Submission, Version 1
Automated Budget and Evaluation system of Texas (ABEST)

8/15/2016 2:23:42PM

| 784 University of Houston - Downtown | | | | | |
|---|-----------------|-----------------|-----------------|----------------|----------------|
| <i>Goal/ Objective / Outcome</i> | Exp 2015 | Est 2016 | Bud 2017 | BL 2018 | BL 2019 |
| 13 Persistence 1st-time, Full-time, Degree-seeking Hisp Frsh after 1 Yr | 70.92% | 72.67% | 74.42% | 76.17% | 77.92% |
| 14 Persistence 1st-time, Full-time, Degree-seeking Black Frsh after 1 Yr | 44.68% | 46.43% | 48.18% | 49.93% | 51.68% |
| 15 Persistence 1st-time, Full-time, Degree-seeking Other Frsh after 1 Yr | 68.14% | 69.89% | 71.64% | 73.39% | 75.14% |
| 16 Percent of Semester Credit Hours Completed | 94.17% | 94.29% | 94.42% | 94.54% | 94.67% |
| KEY 17 Certification Rate of Teacher Education Graduates | 84.87% | 86.60% | 87.07% | 87.53% | 88.00% |
| 18 Percentage of Underprepared Students Satisfy TSI Obligation in Math | 62.66% | 71.40% | 71.90% | 72.40% | 72.90% |
| 19 Percentage of Underprepared Students Satisfy TSI Obligation in Writing | 81.02% | 86.20% | 86.70% | 87.20% | 87.70% |
| 20 Percentage of Underprepared Students Satisfy TSI Obligation in Reading | 88.13% | 72.10% | 72.60% | 73.10% | 73.60% |
| KEY 21 % of Baccalaureate Graduates Who Are 1st Generation College Graduates | 60.33% | 60.00% | 60.00% | 60.00% | 60.00% |
| KEY 22 Percent of Transfer Students Who Graduate within 4 Years | 49.37% | 51.78% | 54.19% | 56.59% | 59.00% |
| KEY 23 Percent of Transfer Students Who Graduate within 2 Years | 25.35% | 25.51% | 25.68% | 25.84% | 26.00% |
| KEY 24 % Lower Division Semester Credit Hours Taught by Tenured/Tenure-Track | 33.32% | 30.87% | 31.37% | 31.87% | 32.37% |
| KEY 30 Dollar Value of External or Sponsored Research Funds (in Millions) | 1.74 | 1.74 | 2.24 | 2.49 | 2.74 |

2.D. Summary of Base Request Objective Outcomes
85th Regular Session, Agency Submission, Version 1
Automated Budget and Evaluation system of Texas (ABEST)

8/15/2016 2:23:42PM

| 784 University of Houston - Downtown | | | | | |
|---|-----------------|-----------------|-----------------|----------------|----------------|
| <i>Goal/ Objective / Outcome</i> | Exp 2015 | Est 2016 | Bud 2017 | BL 2018 | BL 2019 |
| 31 External or Sponsored Research Funds As a % of State Appropriations | | | | | |
| | 926.30% | 926.30% | 1,192.48% | 1,325.57% | 1,458.66% |
| 32 External Research Funds As Percentage Appropriated for Research | | | | | |
| | 1,306.30% | 1,306.30% | 1,681.67% | 1,869.36% | 2,057.05% |
| 48 % Endowed Professorships/ Chairs Unfilled All/ Part of Fiscal Year | | | | | |
| | 25.00% | 25.00% | 25.00% | 0.00% | 0.00% |
| 49 Average No Months Endowed Chairs Remain Vacant | | | | | |
| | 8.00 | 12.00 | 6.00 | 0.00 | 0.00 |

2.E. Summary of Exceptional Items Request
85th Regular Session, Agency Submission, Version 1
Automated Budget and Evaluation System of Texas (ABEST)

DATE: 8/15/2016
TIME : 2:23:42PM

Agency code: 784

Agency name: University of Houston - Downtown

| | | 2018 | | | 2019 | | | Biennium | |
|--------------------------------------|-------------------------------------|---------------------------|-----------|------|------------------------|-----------|------|------------------------|-------------|
| Priority | Item | GR and GR/GR Dedicated | All Funds | FTEs | GR and GR Dedicated | All Funds | FTEs | GR and GR Dedicated | All Funds |
| 1 | Ctr Urban Agricult & Sustainability | \$375,000 | \$375,000 | 1.0 | \$225,000 | \$225,000 | 1.0 | \$600,000 | \$600,000 |
| 2 | Internships-Pathway Career Success | \$300,000 | \$300,000 | 16.9 | \$400,000 | \$400,000 | 22.5 | \$700,000 | \$700,000 |
| Total, Exceptional Items Request | | \$675,000 | \$675,000 | 17.9 | \$625,000 | \$625,000 | 23.5 | \$1,300,000 | \$1,300,000 |
| | | | | | | | | | |
| Method of Financing | | | | | | | | | |
| | General Revenue | \$675,000 | \$675,000 | | \$625,000 | \$625,000 | | \$1,300,000 | \$1,300,000 |
| | General Revenue - Dedicated | | | | | | | | |
| | Federal Funds | | | | | | | | |
| | Other Funds | | | | | | | | |
| | | \$675,000 | \$675,000 | | \$625,000 | \$625,000 | | \$1,300,000 | \$1,300,000 |
| | | | | | | | | | |
| Full Time Equivalent Positions | | | | 17.9 | 23.5 | | | | |
| Number of 100% Federally Funded FTEs | | | | | | | | | |

2.F. Summary of Total Request by Strategy
85th Regular Session, Agency Submission, Version 1
Automated Budget and Evaluation System of Texas (ABEST)

DATE : 8/15/2016

TIME : 2:23:43PM

Agency code: 784

Agency name: University of Houston - Downtown

| Goal/Objective/STRATEGY | Base 2018 | Base 2019 | Exceptional 2018 | Exceptional 2019 | Total Request 2018 | Total Request 2019 |
|--|--------------------|--------------------|---------------------|---------------------|-----------------------|-----------------------|
| 1 Provide Instructional and Operations Support | | | | | | |
| 1 <i>Provide Instructional and Operations Support</i> | | | | | | |
| 1 OPERATIONS SUPPORT | \$0 | \$0 | \$0 | \$0 | \$0 | \$0 |
| 3 STAFF GROUP INSURANCE PREMIUMS | 1,802,950 | 1,929,157 | 0 | 0 | 1,802,950 | 1,929,157 |
| 4 WORKERS' COMPENSATION INSURANCE | 144,964 | 144,964 | 0 | 0 | 144,964 | 144,964 |
| 6 TEXAS PUBLIC EDUCATION GRANTS | 2,218,830 | 2,263,207 | 0 | 0 | 2,218,830 | 2,263,207 |
| TOTAL, GOAL 1 | \$4,166,744 | \$4,337,328 | \$0 | \$0 | \$4,166,744 | \$4,337,328 |
| 2 Provide Infrastructure Support | | | | | | |
| 1 <i>Provide Operation and Maintenance of E&G Space</i> | | | | | | |
| 1 E&G SPACE SUPPORT | 0 | 0 | 0 | 0 | 0 | 0 |
| TOTAL, GOAL 2 | \$0 | \$0 | \$0 | \$0 | \$0 | \$0 |
| 3 Provide Special Item Support | | | | | | |
| 3 <i>Public Service Special Item Support</i> | | | | | | |
| 1 COMMUNITY DEVELOPMENT PROJECT | 381,630 | 381,630 | 0 | 0 | 381,630 | 381,630 |
| 4 <i>Institutional Support Special Item Support</i> | | | | | | |
| 1 INSTITUTIONAL ENHANCEMENT | 2,205,072 | 2,205,072 | 0 | 0 | 2,205,072 | 2,205,072 |
| 5 <i>Exceptional Item Request</i> | | | | | | |
| 1 EXCEPTONAL ITEM REQUEST | 0 | 0 | 675,000 | 625,000 | 675,000 | 625,000 |
| TOTAL, GOAL 3 | \$2,586,702 | \$2,586,702 | \$675,000 | \$625,000 | \$3,261,702 | \$3,211,702 |

2.F. Summary of Total Request by Strategy
85th Regular Session, Agency Submission, Version 1
Automated Budget and Evaluation System of Texas (ABEST)

DATE : 8/15/2016

TIME : 2:23:43PM

Agency code: 784

Agency name: University of Houston - Downtown

| Goal/Objective/STRATEGY | Base 2018 | Base 2019 | Exceptional 2018 | Exceptional 2019 | Total Request 2018 | Total Request 2019 |
|---|--------------------|--------------------|---------------------|---------------------|-----------------------|-----------------------|
| 6 Research Funds | | | | | | |
| 3 Comprehensive Research Fund | | | | | | |
| 1 COMPREHENSIVE RESEARCH FUND | \$0 | \$0 | \$0 | \$0 | \$0 | \$0 |
| TOTAL, GOAL 6 | \$0 | \$0 | \$0 | \$0 | \$0 | \$0 |
| TOTAL, AGENCY STRATEGY REQUEST | \$6,753,446 | \$6,924,030 | \$675,000 | \$625,000 | \$7,428,446 | \$7,549,030 |
| TOTAL, AGENCY RIDER APPROPRIATIONS REQUEST | | | | | | |
| GRAND TOTAL, AGENCY REQUEST | \$6,753,446 | \$6,924,030 | \$675,000 | \$625,000 | \$7,428,446 | \$7,549,030 |

2.F. Summary of Total Request by Strategy
85th Regular Session, Agency Submission, Version 1
Automated Budget and Evaluation System of Texas (ABEST)

DATE : 8/15/2016

TIME : 2:23:43PM

| Agency code: 784 | | Agency name: University of Houston - Downtown | | | | | |
|----------------------------------|-----------------------------------|---|--------------|---------------------|---------------------|-----------------------|-----------------------|
| Goal/Objective/STRATEGY | | Base 2018 | Base 2019 | Exceptional 2018 | Exceptional 2019 | Total Request 2018 | Total Request 2019 |
| General Revenue Funds: | | | | | | | |
| 1 | General Revenue Fund | \$2,723,480 | \$2,723,480 | \$675,000 | \$625,000 | \$3,398,480 | \$3,348,480 |
| | | \$2,723,480 | \$2,723,480 | \$675,000 | \$625,000 | \$3,398,480 | \$3,348,480 |
| General Revenue Dedicated Funds: | | | | | | | |
| 704 | Bd Authorized Tuition Inc | 0 | 0 | 0 | 0 | 0 | 0 |
| 770 | Est Oth Educ & Gen Inco | 4,021,780 | 4,192,364 | 0 | 0 | 4,021,780 | 4,192,364 |
| | | \$4,021,780 | \$4,192,364 | \$0 | \$0 | \$4,021,780 | \$4,192,364 |
| Other Funds: | | | | | | | |
| 802 | License Plate Trust Fund No. 0802 | 8,186 | 8,186 | 0 | 0 | 8,186 | 8,186 |
| | | \$8,186 | \$8,186 | \$0 | \$0 | \$8,186 | \$8,186 |
| TOTAL, METHOD OF FINANCING | | \$6,753,446 | \$6,924,030 | \$675,000 | \$625,000 | \$7,428,446 | \$7,549,030 |
| FULL TIME EQUIVALENT POSITIONS | | 512.4 | 518.4 | 17.9 | 23.5 | 530.3 | 541.9 |

2.G. Summary of Total Request Objective Outcomes
85th Regular Session, Agency Submission, Version 1
Automated Budget and Evaluation system of Texas (ABEST)

Date : 8/15/2016
Time: 2:23:43PM

Agency code: **784** Agency name: **University of Houston - Downtown**

Goal/ Objective / Outcome

| | | BL 2018 | BL 2019 | Excp 2018 | Excp 2019 | Total Request 2018 | Total Request 2019 |
|------------|--|--------------------|--------------------|----------------------|----------------------|-----------------------------------|-----------------------------------|
| 1 | Provide Instructional and Operations Support | | | | | | |
| 1 | <i>Provide Instructional and Operations Support</i> | | | | | | |
| KEY | 1 % 1st-time, Full-time, Degree-seeking Frsh Earn Degree in 6 Yrs | | | | | | |
| | | 22.11% | 24.98% | | | 22.11% | 24.98% |
| | 2 % 1st-time, Full-time, Degree-seeking White Frsh Earn Degree in 6 Yrs | | | | | | |
| | | 18.76% | 20.76% | | | 18.76% | 20.76% |
| | 3 % 1st-time, Full-time, Degree-seeking Hisp Frsh Earn Degree in 6 Yrs | | | | | | |
| | | 23.67% | 26.67% | | | 23.67% | 26.67% |
| | 4 % 1st-time, Full-time, Degree-seeking Black Frsh Earn Degree in 6 Yrs | | | | | | |
| | | 18.92% | 20.92% | | | 18.92% | 20.92% |
| | 5 % 1st-time, Full-time, Degree-seeking Other Frshmn Earn Deg in 6 Yrs | | | | | | |
| | | 21.67% | 24.17% | | | 21.67% | 24.17% |
| KEY | 6 % 1st-time, Full-time, Degree-seeking Frsh Earn Degree in 4 Yrs | | | | | | |
| | | 4.43% | 4.69% | | | 4.43% | 4.69% |
| | 7 % 1st-time, Full-time, Degree-seeking White Frsh Earn Degree in 4 Yrs | | | | | | |
| | | 4.81% | 5.06% | | | 4.81% | 5.06% |
| | 8 % 1st-time, Full-time, Degree-seeking Hisp Frsh Earn Degree in 4 Yrs | | | | | | |
| | | 4.25% | 4.50% | | | 4.25% | 4.50% |

2.G. Summary of Total Request Objective Outcomes
85th Regular Session, Agency Submission, Version 1
Automated Budget and Evaluation system of Texas (ABEST)

Date : 8/15/2016
Time: 2:23:43PM

Agency code: **784** Agency name: **University of Houston - Downtown**

Goal/ Objective / Outcome

| | BL 2018 | BL 2019 | Excp 2018 | Excp 2019 | Total Request 2018 | Total Request 2019 |
|------------|---|--------------------|----------------------|----------------------|-----------------------------------|-----------------------------------|
| | 9 % 1st-time, Full-time, Degree-seeking Black Frsh Earn Degree in 4 Yrs | | | | | |
| | 4.25% | 4.50% | | | 4.25% | 4.50% |
| | 10 % 1st-time, Full-time, Degree-seeking Other Frsh Earn Degree in 4 Yrs | | | | | |
| | 5.29% | 5.54% | | | 5.29% | 5.54% |
| KEY | 11 Persistence Rate 1st-time, Full-time, Degree-seeking Frsh after 1 Yr | | | | | |
| | 71.55% | 73.30% | | | 71.55% | 73.30% |
| | 12 Persistence 1st-time, Full-time, Degree-seeking White Frsh after 1 Yr | | | | | |
| | 55.25% | 57.00% | | | 55.25% | 57.00% |
| | 13 Persistence 1st-time, Full-time, Degree-seeking Hisp Frsh after 1 Yr | | | | | |
| | 76.17% | 77.92% | | | 76.17% | 77.92% |
| | 14 Persistence 1st-time, Full-time, Degree-seeking Black Frsh after 1 Yr | | | | | |
| | 49.93% | 51.68% | | | 49.93% | 51.68% |
| | 15 Persistence 1st-time, Full-time, Degree-seeking Other Frsh after 1 Yr | | | | | |
| | 73.39% | 75.14% | | | 73.39% | 75.14% |
| | 16 Percent of Semester Credit Hours Completed | | | | | |
| | 94.54% | 94.67% | | | 94.54% | 94.67% |
| KEY | 17 Certification Rate of Teacher Education Graduates | | | | | |
| | 87.53% | 88.00% | | | 87.53% | 88.00% |

2.G. Summary of Total Request Objective Outcomes
85th Regular Session, Agency Submission, Version 1
Automated Budget and Evaluation system of Texas (ABEST)

Date : 8/15/2016

Time: 2:23:43PM

Agency code: 784

Agency name: University of Houston - Downtown

Goal/ Objective / Outcome

| | BL 2018 | BL 2019 | Excp 2018 | Excp 2019 | Total Request 2018 | Total Request 2019 |
|---|------------|------------|--------------|--------------|--------------------------|--------------------------|
| 18 Percentage of Underprepared Students Satisfy TSI Obligation in Math | | | | | | |
| | 72.40% | 72.90% | | | 72.40% | 72.90% |
| 19 Percentage of Underprepared Students Satisfy TSI Obligation in Writing | | | | | | |
| | 87.20% | 87.70% | | | 87.20% | 87.70% |
| 20 Percentage of Underprepared Students Satisfy TSI Obligation in Reading | | | | | | |
| | 73.10% | 73.60% | | | 73.10% | 73.60% |
| KEY 21 % of Baccalaureate Graduates Who Are 1st Generation College Graduates | | | | | | |
| | 60.00% | 60.00% | | | 60.00% | 60.00% |
| KEY 22 Percent of Transfer Students Who Graduate within 4 Years | | | | | | |
| | 56.59% | 59.00% | | | 56.59% | 59.00% |
| KEY 23 Percent of Transfer Students Who Graduate within 2 Years | | | | | | |
| | 25.84% | 26.00% | | | 25.84% | 26.00% |
| KEY 24 % Lower Division Semester Credit Hours Taught by Tenured/Tenure-Track | | | | | | |
| | 31.87% | 32.37% | | | 31.87% | 32.37% |
| KEY 30 Dollar Value of External or Sponsored Research Funds (in Millions) | | | | | | |
| | 2.49 | 2.74 | | | 2.49 | 2.74 |
| 31 External or Sponsored Research Funds As a % of State Appropriations | | | | | | |
| | 1,325.57% | 1,458.66% | | | 1,325.57% | 1,458.66% |

2.G. Summary of Total Request Objective Outcomes
85th Regular Session, Agency Submission, Version 1
Automated Budget and Evaluation system of Texas (ABEST)

Date : 8/15/2016
Time: 2:23:43PM

Agency code: **784** Agency name: **University of Houston - Downtown**

Goal/ Objective / Outcome

| | BL 2018 | BL 2019 | Excp 2018 | Excp 2019 | Total Request 2018 | Total Request 2019 |
|--|--------------------|--------------------|----------------------|----------------------|-----------------------------------|-----------------------------------|
| 32 External Research Funds As Percentage Appropriated for Research | | | | | | |
| | 1,869.36% | 2,057.05% | | | 1,869.36% | 2,057.05% |
| 48 % Endowed Professorships/ Chairs Unfilled All/ Part of Fiscal Year | | | | | | |
| | 0.00% | 0.00% | | | 0.00% | 0.00% |
| 49 Average No Months Endowed Chairs Remain Vacant | | | | | | |
| | 0.00 | 0.00 | | | 0.00 | 0.00 |

784 University of Houston - Downtown

GOAL: 1 Provide Instructional and Operations Support
OBJECTIVE: 1 Provide Instructional and Operations Support
STRATEGY: 1 Operations Support

Service Categories:

Service: 19 Income: A.2 Age: B.3

| CODE | DESCRIPTION | Exp 2015 | Est 2016 | Bud 2017 | (1) BL 2018 | (1) BL 2019 |
|------------------------------------|---|------------|------------|------------|----------------|----------------|
| Output Measures: | | | | | | |
| 1 | Number of Undergraduate Degrees Awarded | 2,350.00 | 2,400.00 | 2,456.00 | 2,526.00 | 2,598.00 |
| 2 | Number of Minority Graduates | 1,501.00 | 1,506.00 | 1,542.00 | 1,585.00 | 1,630.00 |
| 3 | Number of Underprepared Students Who Satisfy TSI Obligation in Math | 99.00 | 90.00 | 91.00 | 91.00 | 92.00 |
| 4 | Number of Underprepared Students Who Satisfy TSI Obligation in Writing | 333.00 | 106.00 | 107.00 | 107.00 | 108.00 |
| 5 | Number of Underprepared Students Who Satisfy TSI Obligation in Reading | 193.00 | 101.00 | 102.00 | 102.00 | 103.00 |
| 6 | Number of Two-Year College Transfers Who Graduate | 1,056.00 | 1,056.00 | 1,542.00 | 1,585.00 | 1,630.00 |
| Efficiency Measures: | | | | | | |
| KEY 1 | Administrative Cost As a Percent of Operating Budget | 14.00 % | 14.46 % | 13.97 % | 13.49 % | 13.00 % |
| KEY 2 | Avg Cost of Resident Undergraduate Tuition and Fees for 15 SCH | 3,350.00 | 3,514.00 | 3,641.00 | 3,773.00 | 3,913.00 |
| Explanatory/Input Measures: | | | | | | |
| 1 | Student/Faculty Ratio | 21.02 | 19.24 | 19.75 | 20.00 | 20.00 |
| 2 | Number of Minority Students Enrolled | 9,570.00 | 9,515.00 | 9,436.00 | 9,626.00 | 9,819.00 |
| 3 | Number of Community College Transfers Enrolled | 5,878.00 | 5,731.00 | 5,861.00 | 5,979.00 | 6,099.00 |
| 4 | Number of Semester Credit Hours Completed | 134,247.00 | 130,376.00 | 131,208.00 | 134,008.00 | 136,867.00 |

(1) - Formula funded strategies are not requested in 2018-19 because amounts are not determined by institutions.

784 University of Houston - Downtown

GOAL: 1 Provide Instructional and Operations Support
OBJECTIVE: 1 Provide Instructional and Operations Support
STRATEGY: 1 Operations Support

Service Categories:

Service: 19 Income: A.2 Age: B.3

| CODE | DESCRIPTION | Exp 2015 | Est 2016 | Bud 2017 | (1) BL 2018 | (1) BL 2019 |
|---------------------------------|---|---------------------|---------------------|---------------------|----------------|----------------|
| | 5 Number of Semester Credit Hours | 142,694.00 | 138,125.00 | 138,965.00 | 141,744.00 | 144,579.00 |
| | 6 Number of Students Enrolled as of the Twelfth Class Day | 14,436.00 | 14,262.00 | 14,342.00 | 14,631.00 | 14,924.00 |
| KEY | 7 Average Student Loan Debt | 23,249.00 | 22,812.00 | 23,620.00 | 23,620.00 | 23,620.00 |
| KEY | 8 Percent of Students with Student Loan Debt | 57.00 % | 52.00 % | 53.80 % | 54.80 % | 55.80 % |
| KEY | 9 Average Financial Aid Award Per Full-Time Student | 9,344.00 | 9,727.00 | 9,761.00 | 9,894.00 | 10,033.00 |
| KEY | 10 Percent of Full-Time Students Receiving Financial Aid | 84.60 % | 79.30 % | 82.20 % | 82.20 % | 82.20 % |
| Objects of Expense: | | | | | | |
| 1001 | SALARIES AND WAGES | \$9,147,470 | \$10,181,095 | \$10,793,666 | \$0 | \$0 |
| 1002 | OTHER PERSONNEL COSTS | \$401,515 | \$287,186 | \$291,851 | \$0 | \$0 |
| 1005 | FACULTY SALARIES | \$23,287,998 | \$24,363,283 | \$24,518,048 | \$0 | \$0 |
| 2001 | PROFESSIONAL FEES AND SERVICES | \$898 | \$0 | \$0 | \$0 | \$0 |
| 2003 | CONSUMABLE SUPPLIES | \$1,692 | \$0 | \$0 | \$0 | \$0 |
| 2009 | OTHER OPERATING EXPENSE | \$23,664 | \$0 | \$0 | \$0 | \$0 |
| TOTAL, OBJECT OF EXPENSE | | \$32,863,237 | \$34,831,564 | \$35,603,565 | \$0 | \$0 |
| Method of Financing: | | | | | | |
| 1 | General Revenue Fund | \$19,418,399 | \$21,517,140 | \$21,271,772 | \$0 | \$0 |

(1) - Formula funded strategies are not requested in 2018-19 because amounts are not determined by institutions.

784 University of Houston - Downtown

GOAL: 1 Provide Instructional and Operations Support
OBJECTIVE: 1 Provide Instructional and Operations Support
STRATEGY: 1 Operations Support

Service Categories:

Service: 19 Income: A.2 Age: B.3

| CODE | DESCRIPTION | Exp 2015 | Est 2016 | Bud 2017 | (1) BL 2018 | (1) BL 2019 |
|--|---------------------------|---------------------|---------------------|---------------------|----------------|----------------|
| SUBTOTAL, MOF (GENERAL REVENUE FUNDS) | | \$19,418,399 | \$21,517,140 | \$21,271,772 | \$0 | \$0 |
| Method of Financing: | | | | | | |
| 704 | Bd Authorized Tuition Inc | \$509,896 | \$730,485 | \$951,073 | \$0 | \$0 |
| 770 | Est Oth Educ & Gen Inco | \$12,934,942 | \$12,583,939 | \$13,380,720 | \$0 | \$0 |
| SUBTOTAL, MOF (GENERAL REVENUE FUNDS - DEDICATED) | | \$13,444,838 | \$13,314,424 | \$14,331,793 | \$0 | \$0 |
| TOTAL, METHOD OF FINANCE (INCLUDING RIDERS) | | | | | \$0 | \$0 |
| TOTAL, METHOD OF FINANCE (EXCLUDING RIDERS) | | \$32,863,237 | \$34,831,564 | \$35,603,565 | \$0 | \$0 |
| FULL TIME EQUIVALENT POSITIONS: | | 414.0 | 448.9 | 459.2 | 465.2 | 471.2 |

STRATEGY DESCRIPTION AND JUSTIFICATION:

The Instruction and Operations Formula provides funding for faculty salaries, departmental operating expenses, library, instructional administration, research enhancement, student services and institutional support. The funds are distributed on a weighted semester credit hour basis. The rate per weighted semester credit hour is established by the Legislature each biennium.

EXTERNAL/INTERNAL FACTORS IMPACTING STRATEGY:

(1) - Formula funded strategies are not requested in 2018-19 because amounts are not determined by institutions.

784 University of Houston - Downtown

GOAL: 1 Provide Instructional and Operations Support
OBJECTIVE: 1 Provide Instructional and Operations Support
STRATEGY: 1 Operations Support

Service Categories:

Service: 19 Income: A.2 Age: B.3

(1)

(1)

| CODE | DESCRIPTION | Exp 2015 | Est 2016 | Bud 2017 | BL 2018 | BL 2019 |
|------|-------------|----------|----------|----------|---------|---------|
|------|-------------|----------|----------|----------|---------|---------|

EXPLANATION OF BIENNIAL CHANGE (includes Rider amounts):

| <u>STRATEGY BIENNIAL TOTAL - ALL FUNDS</u> | | <u>BIENNIAL CHANGE</u> | <u>EXPLANATION OF BIENNIAL CHANGE</u> | |
|--|---|----------------------------|---------------------------------------|--|
| <u>Base Spending (Est 2016 + Bud 2017)</u> | <u>Baseline Request (BL 2018 + BL 2019)</u> | | <u>\$ Amount</u> | <u>Explanation(s) of Amount (must specify MOFs and FTEs)</u> |
| \$70,435,129 | \$0 | \$(70,435,129) | \$(70,435,129) | Formula funded strategies are not requested in 2018-19 because amounts are not determined by institutions. |
| | | | <u>\$(70,435,129)</u> | Total of Explanation of Biennial Change |

(1) - Formula funded strategies are not requested in 2018-19 because amounts are not determined by institutions.

784 University of Houston - Downtown

GOAL: 1 Provide Instructional and Operations Support
OBJECTIVE: 1 Provide Instructional and Operations Support
STRATEGY: 3 Staff Group Insurance Premiums

Service Categories:

Service: 06 Income: A.2 Age: B.3

| CODE | DESCRIPTION | Exp 2015 | Est 2016 | Bud 2017 | BL 2018 | BL 2019 |
|--|-------------------------|--------------------|--------------------|--------------------|--------------------|--------------------|
| Objects of Expense: | | | | | | |
| 2009 | OTHER OPERATING EXPENSE | \$1,618,750 | \$1,651,875 | \$1,685,000 | \$1,802,950 | \$1,929,157 |
| TOTAL, OBJECT OF EXPENSE | | \$1,618,750 | \$1,651,875 | \$1,685,000 | \$1,802,950 | \$1,929,157 |
| Method of Financing: | | | | | | |
| 770 | Est Oth Educ & Gen Inco | \$1,618,750 | \$1,651,875 | \$1,685,000 | \$1,802,950 | \$1,929,157 |
| SUBTOTAL, MOF (GENERAL REVENUE FUNDS - DEDICATED) | | \$1,618,750 | \$1,651,875 | \$1,685,000 | \$1,802,950 | \$1,929,157 |
| TOTAL, METHOD OF FINANCE (INCLUDING RIDERS) | | | | | \$1,802,950 | \$1,929,157 |
| TOTAL, METHOD OF FINANCE (EXCLUDING RIDERS) | | \$1,618,750 | \$1,651,875 | \$1,685,000 | \$1,802,950 | \$1,929,157 |

FULL TIME EQUIVALENT POSITIONS:

STRATEGY DESCRIPTION AND JUSTIFICATION:

This strategy is to provide proportional share of staff group insurance premiums paid from Other Educational and General funds.

EXTERNAL/INTERNAL FACTORS IMPACTING STRATEGY:

784 University of Houston - Downtown

GOAL: 1 Provide Instructional and Operations Support
OBJECTIVE: 1 Provide Instructional and Operations Support
STRATEGY: 3 Staff Group Insurance Premiums

Service Categories:

Service: 06 Income: A.2 Age: B.3

| CODE | DESCRIPTION | Exp 2015 | Est 2016 | Bud 2017 | BL 2018 | BL 2019 |
|------|-------------|----------|----------|----------|---------|---------|
|------|-------------|----------|----------|----------|---------|---------|

EXPLANATION OF BIENNIAL CHANGE (includes Rider amounts):

| <u>STRATEGY BIENNIAL TOTAL - ALL FUNDS</u> | | <u>BIENNIAL CHANGE</u> | <u>EXPLANATION OF BIENNIAL CHANGE</u> | |
|--|---|----------------------------|---------------------------------------|---|
| <u>Base Spending (Est 2016 + Bud 2017)</u> | <u>Baseline Request (BL 2018 + BL 2019)</u> | | <u>\$ Amount</u> | <u>Explanation(s) of Amount (must specify MOFs and FTEs)</u> |
| \$3,336,875 | \$3,732,107 | \$395,232 | \$395,232 | The biennial increase is due to the anticipated rise in health insurance costs based on prior year trends and an increase in employees. |
| | | | <u>\$395,232</u> | Total of Explanation of Biennial Change |

784 University of Houston - Downtown

GOAL: 1 Provide Instructional and Operations Support
OBJECTIVE: 1 Provide Instructional and Operations Support
STRATEGY: 4 Workers' Compensation Insurance

Service Categories:

Service: 06 Income: A.2 Age: B.3

| CODE | DESCRIPTION | Exp 2015 | Est 2016 | Bud 2017 | BL 2018 | BL 2019 |
|--|-------------------------|-----------------|-----------------|-----------------|------------------|------------------|
| Objects of Expense: | | | | | | |
| 2009 | OTHER OPERATING EXPENSE | \$57,199 | \$61,100 | \$65,000 | \$144,964 | \$144,964 |
| TOTAL, OBJECT OF EXPENSE | | \$57,199 | \$61,100 | \$65,000 | \$144,964 | \$144,964 |
| Method of Financing: | | | | | | |
| 1 | General Revenue Fund | \$36,338 | \$38,169 | \$40,000 | \$144,964 | \$144,964 |
| SUBTOTAL, MOF (GENERAL REVENUE FUNDS) | | \$36,338 | \$38,169 | \$40,000 | \$144,964 | \$144,964 |
| Method of Financing: | | | | | | |
| 770 | Est Oth Educ & Gen Inco | \$20,861 | \$22,931 | \$25,000 | \$0 | \$0 |
| SUBTOTAL, MOF (GENERAL REVENUE FUNDS - DEDICATED) | | \$20,861 | \$22,931 | \$25,000 | \$0 | \$0 |
| TOTAL, METHOD OF FINANCE (INCLUDING RIDERS) | | | | | \$144,964 | \$144,964 |
| TOTAL, METHOD OF FINANCE (EXCLUDING RIDERS) | | \$57,199 | \$61,100 | \$65,000 | \$144,964 | \$144,964 |
| FULL TIME EQUIVALENT POSITIONS: | | | | | | |

784 University of Houston - Downtown

GOAL: 1 Provide Instructional and Operations Support
OBJECTIVE: 1 Provide Instructional and Operations Support
STRATEGY: 4 Workers' Compensation Insurance

Service Categories:

Service: 06 Income: A.2 Age: B.3

| CODE | DESCRIPTION | Exp 2015 | Est 2016 | Bud 2017 | BL 2018 | BL 2019 |
|------|-------------|----------|----------|----------|---------|---------|
|------|-------------|----------|----------|----------|---------|---------|

STRATEGY DESCRIPTION AND JUSTIFICATION:

The strategy funds the Worker's Compensation payments related to Educational and General funds.

EXTERNAL/INTERNAL FACTORS IMPACTING STRATEGY:

EXPLANATION OF BIENNIAL CHANGE (includes Rider amounts):

| <u>STRATEGY BIENNIAL TOTAL - ALL FUNDS</u> | | <u>BIENNIAL CHANGE</u> | <u>EXPLANATION OF BIENNIAL CHANGE</u> | |
|--|---|----------------------------|---------------------------------------|--|
| <u>Base Spending (Est 2016 + Bud 2017)</u> | <u>Baseline Request (BL 2018 + BL 2019)</u> | | <u>\$ Amount</u> | <u>Explanation(s) of Amount (must specify MOFs and FTEs)</u> |
| \$126,100 | \$289,928 | \$163,828 | \$163,828 | Workers' compensation claims have been low while healthcare costs are rising. The 2018-19 baseline request includes estimated workers' compensation costs related to E&G funds and the 4% reduction. |
| | | | \$163,828 | Total of Explanation of Biennial Change |

784 University of Houston - Downtown

GOAL: 1 Provide Instructional and Operations Support
OBJECTIVE: 1 Provide Instructional and Operations Support
STRATEGY: 6 Texas Public Education Grants

Service Categories:

Service: 20 Income: A.2 Age: B.3

| CODE | DESCRIPTION | Exp 2015 | Est 2016 | Bud 2017 | BL 2018 | BL 2019 |
|--|-------------------------|--------------------|--------------------|--------------------|--------------------|--------------------|
| Objects of Expense: | | | | | | |
| 2009 | OTHER OPERATING EXPENSE | \$2,312,720 | \$2,242,515 | \$2,175,324 | \$2,218,830 | \$2,263,207 |
| TOTAL, OBJECT OF EXPENSE | | \$2,312,720 | \$2,242,515 | \$2,175,324 | \$2,218,830 | \$2,263,207 |
| Method of Financing: | | | | | | |
| 770 | Est Oth Educ & Gen Inco | \$2,312,720 | \$2,242,515 | \$2,175,324 | \$2,218,830 | \$2,263,207 |
| SUBTOTAL, MOF (GENERAL REVENUE FUNDS - DEDICATED) | | \$2,312,720 | \$2,242,515 | \$2,175,324 | \$2,218,830 | \$2,263,207 |
| TOTAL, METHOD OF FINANCE (INCLUDING RIDERS) | | | | | \$2,218,830 | \$2,263,207 |
| TOTAL, METHOD OF FINANCE (EXCLUDING RIDERS) | | \$2,312,720 | \$2,242,515 | \$2,175,324 | \$2,218,830 | \$2,263,207 |

FULL TIME EQUIVALENT POSITIONS:

STRATEGY DESCRIPTION AND JUSTIFICATION:

This strategy represents tuition set aside for the Texas Public Education Grants program as required by Section 56.033 of the Texas Education Code.

EXTERNAL/INTERNAL FACTORS IMPACTING STRATEGY:

784 University of Houston - Downtown

GOAL: 1 Provide Instructional and Operations Support
OBJECTIVE: 1 Provide Instructional and Operations Support
STRATEGY: 6 Texas Public Education Grants

Service Categories:

Service: 20 Income: A.2 Age: B.3

| CODE | DESCRIPTION | Exp 2015 | Est 2016 | Bud 2017 | BL 2018 | BL 2019 |
|------|-------------|----------|----------|----------|---------|---------|
|------|-------------|----------|----------|----------|---------|---------|

EXPLANATION OF BIENNIAL CHANGE (includes Rider amounts):

| <u>STRATEGY BIENNIAL TOTAL - ALL FUNDS</u> | | <u>BIENNIAL CHANGE</u> | <u>EXPLANATION OF BIENNIAL CHANGE</u> | |
|--|---|----------------------------|---------------------------------------|--|
| <u>Base Spending (Est 2016 + Bud 2017)</u> | <u>Baseline Request (BL 2018 + BL 2019)</u> | | <u>\$ Amount</u> | <u>Explanation(s) of Amount (must specify MOFs and FTEs)</u> |
| \$4,417,839 | \$4,482,037 | \$64,198 | \$64,198 | The biennial change is due to enrollment growth and the mix of resident/non-resident students. |
| | | | \$64,198 | Total of Explanation of Biennial Change |

784 University of Houston - Downtown

GOAL: 2 Provide Infrastructure Support
OBJECTIVE: 1 Provide Operation and Maintenance of E&G Space
STRATEGY: 1 Educational and General Space Support

Service Categories:

Service: 10 Income: A.2 Age: B.3

| CODE | DESCRIPTION | Exp 2015 | Est 2016 | Bud 2017 | (1) BL 2018 | (1) BL 2019 |
|--|--------------------------------------|--------------------|--------------------|--------------------|----------------|----------------|
| Efficiency Measures: | | | | | | |
| 1 | Space Utilization Rate of Classrooms | 29.00 | 30.00 | 32.67 | 35.33 | 38.00 |
| 2 | Space Utilization Rate of Labs | 25.00 | 25.00 | 25.00 | 25.00 | 25.00 |
| Objects of Expense: | | | | | | |
| 1001 | SALARIES AND WAGES | \$1,773,379 | \$1,868,907 | \$2,148,941 | \$0 | \$0 |
| 1002 | OTHER PERSONNEL COSTS | \$4,778 | \$0 | \$0 | \$0 | \$0 |
| 2004 | UTILITIES | \$39,569 | \$0 | \$0 | \$0 | \$0 |
| 2009 | OTHER OPERATING EXPENSE | \$252 | \$444 | \$0 | \$0 | \$0 |
| TOTAL, OBJECT OF EXPENSE | | \$1,817,978 | \$1,869,351 | \$2,148,941 | \$0 | \$0 |
| Method of Financing: | | | | | | |
| 1 | General Revenue Fund | \$1,817,978 | \$1,869,351 | \$2,148,941 | \$0 | \$0 |
| SUBTOTAL, MOF (GENERAL REVENUE FUNDS) | | \$1,817,978 | \$1,869,351 | \$2,148,941 | \$0 | \$0 |
| TOTAL, METHOD OF FINANCE (INCLUDING RIDERS) | | | | | \$0 | \$0 |
| TOTAL, METHOD OF FINANCE (EXCLUDING RIDERS) | | \$1,817,978 | \$1,869,351 | \$2,148,941 | \$0 | \$0 |
| FULL TIME EQUIVALENT POSITIONS: | | 36.8 | 39.6 | 45.0 | 45.0 | 45.0 |

(1) - Formula funded strategies are not requested in 2018-19 because amounts are not determined by institutions.

784 University of Houston - Downtown

GOAL: 2 Provide Infrastructure Support
OBJECTIVE: 1 Provide Operation and Maintenance of E&G Space
STRATEGY: 1 Educational and General Space Support

Service Categories:
Service: 10 Income: A.2 Age: B.3

| CODE | DESCRIPTION | Exp 2015 | Est 2016 | Bud 2017 | (1) BL 2018 | (1) BL 2019 |
|------|-------------|----------|----------|----------|----------------|----------------|
|------|-------------|----------|----------|----------|----------------|----------------|

STRATEGY DESCRIPTION AND JUSTIFICATION:

The portion of the formula related to utilities is adjusted to reflect differences in unit costs for purchased utilities, including electricity, natural gas, water and wastewater, and thermal energy.

EXTERNAL/INTERNAL FACTORS IMPACTING STRATEGY:

EXPLANATION OF BIENNIAL CHANGE (includes Rider amounts):

| <u>STRATEGY BIENNIAL TOTAL - ALL FUNDS</u> | | <u>BIENNIAL CHANGE</u> | <u>EXPLANATION OF BIENNIAL CHANGE</u> | |
|--|---|----------------------------|---------------------------------------|--|
| <u>Base Spending (Est 2016 + Bud 2017)</u> | <u>Baseline Request (BL 2018 + BL 2019)</u> | | <u>\$ Amount</u> | <u>Explanation(s) of Amount (must specify MOFs and FTEs)</u> |
| \$4,018,292 | \$0 | \$(4,018,292) | \$(4,018,292) | Formula funded strategies are not requested in 2018-19 because amounts are not determined by institutions. |
| | | | \$(4,018,292) | Total of Explanation of Biennial Change |

(1) - Formula funded strategies are not requested in 2018-19 because amounts are not determined by institutions.

784 University of Houston - Downtown

GOAL: 3 Provide Special Item Support
OBJECTIVE: 3 Public Service Special Item Support
STRATEGY: 1 Community Development Project

Service Categories:

Service: 15 Income: A.2 Age: B.3

| CODE | DESCRIPTION | Exp 2015 | Est 2016 | Bud 2017 | BL 2018 | BL 2019 |
|--|-------------------------|------------------|------------------|------------------|------------------|------------------|
| Objects of Expense: | | | | | | |
| 2003 | CONSUMABLE SUPPLIES | \$17,173 | \$0 | \$0 | \$0 | \$0 |
| 2009 | OTHER OPERATING EXPENSE | \$7,629 | \$0 | \$0 | \$0 | \$0 |
| 3001 | CLIENT SERVICES | \$5,100 | \$0 | \$0 | \$0 | \$0 |
| 4000 | GRANTS | \$362,908 | \$397,531 | \$397,531 | \$381,630 | \$381,630 |
| TOTAL, OBJECT OF EXPENSE | | \$392,810 | \$397,531 | \$397,531 | \$381,630 | \$381,630 |
| Method of Financing: | | | | | | |
| 1 | General Revenue Fund | \$392,810 | \$397,531 | \$397,531 | \$381,630 | \$381,630 |
| SUBTOTAL, MOF (GENERAL REVENUE FUNDS) | | \$392,810 | \$397,531 | \$397,531 | \$381,630 | \$381,630 |
| TOTAL, METHOD OF FINANCE (INCLUDING RIDERS) | | | | | \$381,630 | \$381,630 |
| TOTAL, METHOD OF FINANCE (EXCLUDING RIDERS) | | \$392,810 | \$397,531 | \$397,531 | \$381,630 | \$381,630 |
| FULL TIME EQUIVALENT POSITIONS: | | | | | | |
| STRATEGY DESCRIPTION AND JUSTIFICATION: | | | | | | |

784 University of Houston - Downtown

GOAL: 3 Provide Special Item Support

OBJECTIVE: 3 Public Service Special Item Support

STRATEGY: 1 Community Development Project

Service Categories:

Service: 15 Income: A.2 Age: B.3

| CODE | DESCRIPTION | Exp 2015 | Est 2016 | Bud 2017 | BL 2018 | BL 2019 |
|------|-------------|----------|----------|----------|---------|---------|
|------|-------------|----------|----------|----------|---------|---------|

These funds serve as seed money for community-based efforts to revitalize two separate economically depressed north side neighborhoods - the predominately African-American Acres Homes subdivision and the largely Hispanic area known as the near north side. Projects in both areas have their own boards that oversee a variety of economic development and community enhancement efforts. These boards, which are required to provide periodic status reports to the university leadership, operate with a high degree of autonomy.

In recent years a portion of the annual allocation has been made available to the university. UHD faculty can apply for Community Development grants to fund programs that involve UHD students. UHD students worked to introduce inquiry-based learning of science to elementary school teachers and students. Other UHD students focused on community campaigns to spay, neuter, and vaccinate animals. In Kegan State jail, graduate English majors developed and implemented a prison literacy program to prepare incarcerated young men to take the GED. UHD STEM undergraduate students mentored middle school aged students, encouraging them to consider attending college and majoring in STEM.

The community needs that are addressed through this item far outstrip the funding available. The funds support youth leadership and development programs, summer educational enrichment programs for at-risk children, supplemental nutrition, women's empowerment, and other vital community needs.

EXTERNAL/INTERNAL FACTORS IMPACTING STRATEGY:

Additional information for this strategy is available in Schedule 9, Special Item Information.

784 University of Houston - Downtown

GOAL: 3 Provide Special Item Support
OBJECTIVE: 3 Public Service Special Item Support
STRATEGY: 1 Community Development Project

Service Categories:

Service: 15 Income: A.2 Age: B.3

| CODE | DESCRIPTION | Exp 2015 | Est 2016 | Bud 2017 | BL 2018 | BL 2019 |
|------|-------------|----------|----------|----------|---------|---------|
|------|-------------|----------|----------|----------|---------|---------|

EXPLANATION OF BIENNIAL CHANGE (includes Rider amounts):

| <u>STRATEGY BIENNIAL TOTAL - ALL FUNDS</u> | | <u>BIENNIAL CHANGE</u> | <u>EXPLANATION OF BIENNIAL CHANGE</u> | |
|--|---|----------------------------|---------------------------------------|--|
| <u>Base Spending (Est 2016 + Bud 2017)</u> | <u>Baseline Request (BL 2018 + BL 2019)</u> | | <u>\$ Amount</u> | <u>Explanation(s) of Amount (must specify MOFs and FTEs)</u> |
| \$795,062 | \$763,260 | \$(31,802) | \$(31,802) | The biennial change is due to the required 4% reduction. |
| | | | <u>\$(31,802)</u> | Total of Explanation of Biennial Change |

784 University of Houston - Downtown

GOAL: 3 Provide Special Item Support
OBJECTIVE: 4 Institutional Support Special Item Support
STRATEGY: 1 Institutional Enhancement

Service Categories:

Service: 19 Income: A.2 Age: B.3

| CODE | DESCRIPTION | Exp 2015 | Est 2016 | Bud 2017 | BL 2018 | BL 2019 |
|--|-----------------------------------|------------|----------------|----------------|--------------------|--------------------|
| Objects of Expense: | | | | | | |
| 1001 | SALARIES AND WAGES | \$0 | \$0 | \$0 | \$2,196,886 | \$2,196,886 |
| 2009 | OTHER OPERATING EXPENSE | \$0 | \$8,186 | \$8,186 | \$8,186 | \$8,186 |
| TOTAL, OBJECT OF EXPENSE | | \$0 | \$8,186 | \$8,186 | \$2,205,072 | \$2,205,072 |
| Method of Financing: | | | | | | |
| 1 | General Revenue Fund | \$0 | \$0 | \$0 | \$2,196,886 | \$2,196,886 |
| SUBTOTAL, MOF (GENERAL REVENUE FUNDS) | | \$0 | \$0 | \$0 | \$2,196,886 | \$2,196,886 |
| Method of Financing: | | | | | | |
| 802 | License Plate Trust Fund No. 0802 | \$0 | \$8,186 | \$8,186 | \$8,186 | \$8,186 |
| SUBTOTAL, MOF (OTHER FUNDS) | | \$0 | \$8,186 | \$8,186 | \$8,186 | \$8,186 |
| TOTAL, METHOD OF FINANCE (INCLUDING RIDERS) | | | | | \$2,205,072 | \$2,205,072 |
| TOTAL, METHOD OF FINANCE (EXCLUDING RIDERS) | | \$0 | \$8,186 | \$8,186 | \$2,205,072 | \$2,205,072 |
| FULL TIME EQUIVALENT POSITIONS: | | | | | | |

784 University of Houston - Downtown

GOAL: 3 Provide Special Item Support
OBJECTIVE: 4 Institutional Support Special Item Support
STRATEGY: 1 Institutional Enhancement

Service Categories:
Service: 19 Income: A.2 Age: B.3

| CODE | DESCRIPTION | Exp 2015 | Est 2016 | Bud 2017 | BL 2018 | BL 2019 |
|------|-------------|----------|----------|----------|---------|---------|
|------|-------------|----------|----------|----------|---------|---------|

STRATEGY DESCRIPTION AND JUSTIFICATION:

This item was first created by the 76th Legislature and has been adjusted numerous times over the years. While the basis for this funding ties back to discontinued special items that were rolled up into a single line, the fact is that Institutional Enhancement funds have become de facto operating dollars for state universities, comparable in terms of use to what is received through the Operations Support formula.

EXTERNAL/INTERNAL FACTORS IMPACTING STRATEGY:

EXPLANATION OF BIENNIAL CHANGE (includes Rider amounts):

| <u>STRATEGY BIENNIAL TOTAL - ALL FUNDS</u> | | <u>BIENNIAL CHANGE</u> | <u>EXPLANATION OF BIENNIAL CHANGE</u> | |
|--|---|----------------------------|---------------------------------------|---|
| <u>Base Spending (Est 2016 + Bud 2017)</u> | <u>Baseline Request (BL 2018 + BL 2019)</u> | | <u>\$ Amount</u> | <u>Explanation(s) of Amount (must specify MOFs and FTEs)</u> |
| \$16,372 | \$4,410,144 | \$4,393,772 | \$4,393,772 | 2015-2017 amounts are not reported in this strategy but are reflected in Operations Support. The required 4% reduction is included in the 2018-19 baseline request. |
| | | | <u>\$4,393,772</u> | Total of Explanation of Biennial Change |

784 University of Houston - Downtown

GOAL: 6 Research Funds
OBJECTIVE: 3 Comprehensive Research Fund
STRATEGY: 1 Comprehensive Research Fund

Service Categories:

Service: 21 Income: A.2 Age: B.3

| CODE | DESCRIPTION | Exp 2015 | Est 2016 | Bud 2017 | BL 2018 | BL 2019 |
|--|-----------------------|------------------|------------------|------------------|------------|------------|
| Objects of Expense: | | | | | | |
| 1001 | SALARIES AND WAGES | \$132,543 | \$166,791 | \$166,791 | \$0 | \$0 |
| 1002 | OTHER PERSONNEL COSTS | \$800 | \$0 | \$0 | \$0 | \$0 |
| TOTAL, OBJECT OF EXPENSE | | \$133,343 | \$166,791 | \$166,791 | \$0 | \$0 |
| Method of Financing: | | | | | | |
| 1 | General Revenue Fund | \$133,343 | \$166,791 | \$166,791 | \$0 | \$0 |
| SUBTOTAL, MOF (GENERAL REVENUE FUNDS) | | \$133,343 | \$166,791 | \$166,791 | \$0 | \$0 |
| TOTAL, METHOD OF FINANCE (INCLUDING RIDERS) | | | | | \$0 | \$0 |
| TOTAL, METHOD OF FINANCE (EXCLUDING RIDERS) | | \$133,343 | \$166,791 | \$166,791 | \$0 | \$0 |
| FULL TIME EQUIVALENT POSITIONS: | | 2.3 | 3.1 | 2.2 | 2.2 | 2.2 |
| STRATEGY DESCRIPTION AND JUSTIFICATION: | | | | | | |

784 University of Houston - Downtown

GOAL: 6 Research Funds
OBJECTIVE: 3 Comprehensive Research Fund
STRATEGY: 1 Comprehensive Research Fund

Service Categories:
Service: 21 Income: A.2 Age: B.3

| CODE | DESCRIPTION | Exp 2015 | Est 2016 | Bud 2017 | BL 2018 | BL 2019 |
|------|-------------|----------|----------|----------|---------|---------|
|------|-------------|----------|----------|----------|---------|---------|

The Texas Comprehensive Research Fund provides funding to promote increased research capacity at eligible general academic teaching institutions including those other than The University of Texas at Austin, Texas A&M University or any institution designated as an emerging research university under the Higher Education Coordinating Board's (THECB) accountability system. Funding is to be expended for the support and maintenance of educational and general activities, including research and student services, that promote increased research capacity. A legislatively determined amount of funding is allocated based on the average amount of restricted research funds expended by each institution per year for the three preceding state fiscal years as reported to THECB.

EXTERNAL/INTERNAL FACTORS IMPACTING STRATEGY:

EXPLANATION OF BIENNIAL CHANGE (includes Rider amounts):

| <u>STRATEGY BIENNIAL TOTAL - ALL FUNDS</u> | | <u>BIENNIAL CHANGE</u> | <u>EXPLANATION OF BIENNIAL CHANGE</u> | |
|--|--------------------------------------|----------------------------|---------------------------------------|--|
| Base Spending (Est 2016 + Bud 2017) | Baseline Request (BL 2018 + BL 2019) | | \$ Amount | Explanation(s) of Amount (must specify MOFs and FTEs) |
| \$333,582 | \$0 | \$(333,582) | \$(333,582) | Research fund strategies are not requested because amounts are not determined by institutions. |
| | | | \$(333,582) | Total of Explanation of Biennial Change |

SUMMARY TOTALS:

| | | | | | |
|---|---------------------|---------------------|---------------------|--------------------|--------------------|
| OBJECTS OF EXPENSE: | \$39,196,037 | \$41,228,913 | \$42,250,338 | \$6,753,446 | \$6,924,030 |
| METHODS OF FINANCE (INCLUDING RIDERS): | | | | \$6,753,446 | \$6,924,030 |
| METHODS OF FINANCE (EXCLUDING RIDERS): | \$39,196,037 | \$41,228,913 | \$42,250,338 | \$6,753,446 | \$6,924,030 |
| FULL TIME EQUIVALENT POSITIONS: | 453.1 | 491.6 | 506.4 | 512.4 | 518.4 |

3.A.1. PROGRAM-LEVEL REQUEST SCHEDULE
85th Regular Session, Agency Submission, Version 1

| Agency Code: 784 | | Agency: University of Houston-Downtown | | | | | Prepared By: Preston Heng | | | | | |
|-------------------|------------------------|--|---|---------|---|--------------|---------------------------|-------------------|-------------------|-------------------------|---------------------|--|
| Date: August 2016 | | | | | | | 16-17 Base | Requested 2018 | Requested 2019 | Biennial Total 18-19 | Biennial Difference | |
| Goal | Goal Name | Strategy | Strategy Name | Program | Program Name | \$ | | | | | % | |
| A | Instruction/Operations | A.1.1 | Operations Support | A.1.1 | Operations Support | \$63,536,709 | \$0 | \$0 | \$0 | (\$63,536,709) | -100.0% | |
| A | Instruction/Operations | A.1.2 | Teaching Experience Supplement | A.1.2 | Teaching Experience Supplement | \$2,305,202 | \$0 | \$0 | \$0 | (\$2,305,202) | -100.0% | |
| A | Instruction/Operations | A.1.3 | Staff Group Insurance Premiums | A.1.3 | Staff Group Insurance Premiums | \$3,336,875 | \$1,802,950 | \$1,929,157 | \$3,732,107 | \$395,232 | 11.8% | |
| A | Instruction/Operations | A.1.4 | Workers' Compensation Insurance | A.1.4 | Workers' Compensation Insurance | \$126,100 | \$144,964 | \$144,964 | \$289,928 | \$163,828 | 129.9% | |
| A | Instruction/Operations | A.1.5 | Texas Public Education Grants | A.1.5 | Texas Public Education Grants | \$4,417,839 | \$2,218,830 | \$2,263,207 | \$4,482,037 | \$64,198 | 1.5% | |
| B | Infrastructure Support | B.1.1 | E&G Space Support | B.1.1 | E&G Space Support | \$4,018,292 | \$0 | \$0 | \$0 | (\$4,018,292) | -100.0% | |
| C | Special Item Support | C.1.1 | Community Development Project | C.1.1 | Community Development Project | \$795,062 | \$381,630 | \$381,630 | \$763,260 | (\$31,802) | -4.0% | |
| C | Special Item Support | C.2.1 | Institutional Enhancement | C.2.1 | Operations Support - Faculty Salaries | \$4,593,218 | \$2,196,886 | \$2,196,886 | \$4,393,772 | (\$199,446) | -4.3% | |
| C | Special Item Support | C.2.1 | Institutional Enhancement | C.2.1 | License Plate Scholarships | \$16,372 | \$8,186 | \$8,186 | \$16,372 | \$0 | 0.0% | |
| C | Special Item Support | C | Except Item-Ctr Urban Agriculture & Sustain | C | Center for Urban Agriculture & Sustainability | \$0 | \$375,000 | \$225,000 | \$600,000 | \$600,000 | | |
| C | Special Item Support | C | Except Item-Internship-Path to Career Success | C | Internships-A Pathway to Career Success | \$0 | \$300,000 | \$400,000 | \$700,000 | \$700,000 | | |
| D | Research Funds | D.1.1 | Comprehensive Research Fund | D.1.1 | Comprehensive Research Fund | \$333,582 | \$0 | \$0 | \$0 | (\$333,582) | -100.0% | |

4.A. Exceptional Item Request Schedule
85th Regular Session, Agency Submission, Version 1
Automated Budget and Evaluation System of Texas (ABEST)

DATE: **8/15/2016**
TIME: **2:23:46PM**

Agency code: **784**

Agency name:

University of Houston - Downtown

| CODE | DESCRIPTION | Excp 2018 | Excp 2019 |
|--|-------------------------|------------------|------------------|
| Item Name: Center for Urban Agriculture & Sustainability Item Priority: 1 IT Component: No Anticipated Out-year Costs: Yes Involve Contracts > \$50,000: No Includes Funding for the Following Strategy or Strategies: 03-05-01 Exceptional Item Request | | | |
| OBJECTS OF EXPENSE: | | | |
| 1001 | SALARIES AND WAGES | 65,000 | 65,000 |
| 2009 | OTHER OPERATING EXPENSE | 310,000 | 160,000 |
| TOTAL, OBJECT OF EXPENSE | | \$375,000 | \$225,000 |
| METHOD OF FINANCING: | | | |
| 1 | General Revenue Fund | 375,000 | 225,000 |
| TOTAL, METHOD OF FINANCING | | \$375,000 | \$225,000 |
| FULL-TIME EQUIVALENT POSITIONS (FTE): | | 1.00 | 1.00 |

DESCRIPTION / JUSTIFICATION:

UHD requests exceptional item funding to expand its Center for Urban Agriculture & Sustainability (CUAS) through the construction of a greenhouse and outside agricultural laboratory. This greenhouse/lab will be placed on land that will be adjacent to the new Science & Technology Building, a project funded during the last session that is now getting underway. Included in this request is funding for a staff position to help support and expand the current initiatives led by faculty. Houston is the fourth largest city and one of the fastest growing in the country. However, according to the 2016 Healthy Living Matters report, the average age of farmers in the region is 57 years old. Despite an aging agricultural workforce, demand for both locally grown and organic food is increasing, with most of that demand now being met by product that is imported from out of state. For the stability of the Harris County food system, the economic benefit of the region, and the health of its people, Houston needs to create a healthy, sustainable food system that supports the creation of new urban farms, community gardens, and backyard growing. Given the clear link between the quality of food systems and childhood obesity, improving the food systems in Houston should reduce the staggering costs of childhood obesity in the region. In Harris County 1 in 3 children are overweight or obese, and obesity in Harris County is now estimated to cost \$3 billion annually. Houston has a number of non-profit organizations and local agencies dedicated to addressing issues of sustainable planning and food availability. There is a need for an academic center in the downtown area that can conduct applied research and connect research to these active community groups. UHD's CUAS will address goals – increasing urban food production, becoming a leader in sustainable technologies and business, reducing our global carbon footprint, and creating stable urban ecosystems.

EXTERNAL/INTERNAL FACTORS:

The City of Houston has leveraged millions of dollars into green energy and other sustainability initiatives. Non-profit organizations such as Houston Tomorrow have supported policy and funding for sustainable development. The CUAS is engaged with community research projects, for example, working with Texas A&M AgriLife Extension Service for Harris County to conduct experiments on plant varieties and organic pesticides for urban environments. The CUAS has created solar-powered irrigation systems both at the UHD Sustainability Garden and Target Hunger's Kashmere Gardens. The CUAS will also initiate a project at the new Seeds of the Soil garden in

4.A. Exceptional Item Request Schedule
85th Regular Session, Agency Submission, Version 1
Automated Budget and Evaluation System of Texas (ABEST)

DATE: **8/15/2016**
TIME: **2:23:46PM**

Agency code: **784**

Agency name:

University of Houston - Downtown

| CODE | DESCRIPTION | Excp 2018 | Excp 2019 |
|-------------|--------------------|------------------|------------------|
|-------------|--------------------|------------------|------------------|

Houston's Fifth Ward. These community connections, including a collaboration with Houston Community College, will allow more students to engage in finding solutions to grow Houston's urban agriculture. UHD plans to develop continuing education certificates in the areas of urban agriculture and sustainability to educate the community. Educating UHD students with the initiatives of the CUAS will directly impact the neighborhoods where many UHD students live.

Major accomplishments to date and expected over the next two years: This program grew out of a USDA NIFA grant funded 6 years ago. Recently, we built gardens and infrastructure (solar irrigation systems). Food from these gardens is distributed by non-profits to the homeless. Next year, students will work on research projects (organic pesticides, variety trials for urban environments). Continuing education will support demand for local food and a sustainable Houston.

Year established and funding source prior to receiving special item funding: CUAS was established in 2015 with institutional and funding from WCA waste management company. In 2016, USDA NIFA awarded UHD a \$250,000 grant for development of the CUAS.

Formula funding: None

Non-general revenue sources of funding: Federal, institutional, private.

Consequences of not funding: Seek alternate funding.

DESCRIPTION OF ANTICIPATED OUT-YEAR COSTS :

The vision of the CUAS is that Houston citizens will apply their knowledge and resources to create sustainable neighborhoods throughout the city. To this end in the out-years, costs would include staffing of the center including the greenhouse and gardens as well as a scaling up of this multi-disciplinary program through entrepreneurial projects across the city.

ESTIMATED ANTICIPATED OUT-YEAR COSTS FOR ITEM:

| <u>2020</u> | <u>2021</u> | <u>2022</u> |
|-------------|-------------|-------------|
| \$225,000 | \$225,000 | \$225,000 |

4.A. Exceptional Item Request Schedule
85th Regular Session, Agency Submission, Version 1
Automated Budget and Evaluation System of Texas (ABEST)

DATE: **8/15/2016**
TIME: **2:23:46PM**

Agency code: **784**

Agency name:

University of Houston - Downtown

| CODE | DESCRIPTION | Excp 2018 | Excp 2019 |
|---|----------------------|------------------|------------------|
| <p style="text-align: right;"> Item Name: Internships-A Pathway to Career Success Item Priority: 2 IT Component: No Anticipated Out-year Costs: Yes Involve Contracts > \$50,000: No Includes Funding for the Following Strategy or Strategies: 03-05-01 Exceptional Item Request </p> | | | |
| OBJECTS OF EXPENSE: | | | |
| 1001 | SALARIES AND WAGES | 300,000 | 400,000 |
| TOTAL, OBJECT OF EXPENSE | | \$300,000 | \$400,000 |
| METHOD OF FINANCING: | | | |
| 1 | General Revenue Fund | 300,000 | 400,000 |
| TOTAL, METHOD OF FINANCING | | \$300,000 | \$400,000 |
| FULL-TIME EQUIVALENT POSITIONS (FTE): | | 16.90 | 22.50 |

DESCRIPTION / JUSTIFICATION:

UHD requests funding to provide summer stipends for students pursuing internships in their junior and senior year with non-profit organizations, which are hard-pressed to attract students due to their inability to provide paid internships. This item recognizes that internships are among the most impactful in creating a smooth transition from the classroom to careers and will extend our existing initiatives of community engagement. This item also recognizes that minority students, like those served by UHD, have long been underrepresented when it comes to participation in internship programs as low-income students, taking an unpaid internship is often not an option due to their financial obligations.

UHD's mission focuses on academic and career preparation, and has a strong commitment to serving minority students and the Houston Metropolitan area. UHD has been successful at providing experiential learning opportunities such as undergraduate research, study-abroad, and community engagement experiences for its students. These drive students to engage in higher-order thinking as they pair their classroom learning with "real-world" experiences. Through this request, UHD is seeking to enhance career exploration pathways by proposing stipends to support 8-week summer internships (20hr/week). To qualify for this stipend, students would be required to take 6 credit hours in the summer, allowing them to stay on track to graduate in a timely manner while obtaining valuable work experience.

Furthermore, internship opportunities will be developed with non-profit organizations, thus supporting the non-profit sector in Greater Houston. In addition to a Masters in Non-Profit Management that is closely tied to the non-profit sector, UHD programs in criminal justice, social work, and business have also developed strong relationships with community partners. UHD plans to leverage these existing relationships to encourage private philanthropy to support the program.

EXTERNAL/INTERNAL FACTORS:

Nearly 60% of employers taking part in National Association of Colleges and Employer's (NACE) Job Outlook 2015 survey said that they prefer to hire job candidates with work experience gained through internships or co-op experiences. Nationally, more than half of intern/co-op students had served in their preferred industry but only 25%

4.A. Exceptional Item Request Schedule
85th Regular Session, Agency Submission, Version 1
Automated Budget and Evaluation System of Texas (ABEST)

DATE: **8/15/2016**
TIME: **2:23:46PM**

Agency code: **784**

Agency name:

University of Houston - Downtown

| CODE | DESCRIPTION | Excp 2018 | Excp 2019 |
|-------------|--------------------|------------------|------------------|
|-------------|--------------------|------------------|------------------|

worked for non-profit organizations. Moreover, African-American and Hispanic-American students are less likely to have had an internship experience than White, multiracial, or international students. With UHD's student population being 45% Hispanic and 25% African American, its graduates are at a disadvantage even before they enter into the workforce.

At UHD less than 5% of students have access to internship opportunities, and that includes mandatory internships for certain programs, which have proven to be very impactful. In the Urban Education program, where field experience in a classroom is part of their graduation requirement, 93% of students get a job in their field upon graduation. This internship initiative builds on UHD's nationally recognized track record in community engagement and will help students build their careers in one of the fastest growing sectors in our region.

Major accomplishments to date and expected over the next two years: UHD was designated the 2012 US President's Higher Education Community Service Honor Roll with Distinction and the 2015 Community Engagement Classification from The Carnegie Foundation. UHD plans to build on its strength in community engagement by doubling the number of internships available to UHD students.

Year established and funding source prior to receiving special item funding: In spring 2015, the Center for Community Engagement and Service Learning was established with institutional funding and private philanthropy.

Formula Funding: None

Non-general revenue sources of funding: Institutional & private.

Consequences of not funding: Seek alternate funding.

DESCRIPTION OF ANTICIPATED OUT-YEAR COSTS :

UHD plans to leverage the existing community relationships to encourage private and public philanthropy to support this program. The goal is to at least double the number of students doing summer internships and not allowing their financial obligation to refrain them from achieving their career goals.

ESTIMATED ANTICIPATED OUT-YEAR COSTS FOR ITEM:

| 2020 | 2021 | 2022 |
|-------------|-------------|-------------|
| \$400,000 | \$400,000 | \$400,000 |

4.B. Exceptional Items Strategy Allocation Schedule

85th Regular Session, Agency Submission, Version 1

Automated Budget and Evaluation System of Texas (ABEST)

DATE: 8/15/2016

TIME: 2:23:47PM

| Agency code: 784 | | Agency name: University of Houston - Downtown | |
|--|-------------------------|--|--------------------------|
| Code | Description | Excp 2018 | Excp 2019 |
| Item Name: | | Center for Urban Agriculture & Sustainability | |
| Allocation to Strategy: | | 3-5-1 | Exceptional Item Request |
| OBJECTS OF EXPENSE: | | | |
| 1001 | SALARIES AND WAGES | 65,000 | 65,000 |
| 2009 | OTHER OPERATING EXPENSE | 310,000 | 160,000 |
| TOTAL, OBJECT OF EXPENSE | | \$375,000 | \$225,000 |
| METHOD OF FINANCING: | | | |
| 1 | General Revenue Fund | 375,000 | 225,000 |
| TOTAL, METHOD OF FINANCING | | \$375,000 | \$225,000 |
| FULL-TIME EQUIVALENT POSITIONS (FTE): | | 1.0 | 1.0 |

4.B. Exceptional Items Strategy Allocation Schedule
85th Regular Session, Agency Submission, Version 1
Automated Budget and Evaluation System of Texas (ABEST)

DATE: **8/15/2016**
TIME: **2:23:47PM**

| Agency code: 784 | | Agency name: University of Houston - Downtown | |
|---|----------------------|--|------------------|
| Code | Description | Excp 2018 | Excp 2019 |
| Item Name: Internships-A Pathway to Career Success | | | |
| Allocation to Strategy: 3-5-1 Exceptional Item Request | | | |
| OBJECTS OF EXPENSE: | | | |
| 1001 | SALARIES AND WAGES | 300,000 | 400,000 |
| TOTAL, OBJECT OF EXPENSE | | \$300,000 | \$400,000 |
| METHOD OF FINANCING: | | | |
| 1 | General Revenue Fund | 300,000 | 400,000 |
| TOTAL, METHOD OF FINANCING | | \$300,000 | \$400,000 |
| FULL-TIME EQUIVALENT POSITIONS (FTE): | | 16.9 | 22.5 |

4.C. Exceptional Items Strategy Request
85th Regular Session, Agency Submission, Version 1
Automated Budget and Evaluation System of Texas (ABEST)

DATE: 8/15/2016
TIME: 2:23:47PM

Agency Code: **784** Agency name: **University of Houston - Downtown**

GOAL: 3 Provide Special Item Support

OBJECTIVE: 5 Exceptional Item Request

STRATEGY: 1 Exceptional Item Request

Service Categories:

Service: 19 Income: A.2 Age: B.3

| CODE | DESCRIPTION | Excp 2018 | Excp 2019 |
|------|-------------|-----------|-----------|
|------|-------------|-----------|-----------|

OBJECTS OF EXPENSE:

| | | | |
|------|--------------------|---------|---------|
| 1001 | SALARIES AND WAGES | 365,000 | 465,000 |
|------|--------------------|---------|---------|

| | | | |
|------|-------------------------|---------|---------|
| 2009 | OTHER OPERATING EXPENSE | 310,000 | 160,000 |
|------|-------------------------|---------|---------|

| | | | |
|----------------------------------|--|------------------|------------------|
| Total, Objects of Expense | | \$675,000 | \$625,000 |
|----------------------------------|--|------------------|------------------|

METHOD OF FINANCING:

| | | | |
|---|----------------------|---------|---------|
| 1 | General Revenue Fund | 675,000 | 625,000 |
|---|----------------------|---------|---------|

| | | | |
|---------------------------------|--|------------------|------------------|
| Total, Method of Finance | | \$675,000 | \$625,000 |
|---------------------------------|--|------------------|------------------|

| | | |
|--|------|------|
| FULL-TIME EQUIVALENT POSITIONS (FTE): | 17.9 | 23.5 |
|--|------|------|

EXCEPTIONAL ITEM(S) INCLUDED IN STRATEGY:

Center for Urban Agriculture & Sustainability

Internships-A Pathway to Career Success

6.A. Historically Underutilized Business Supporting Schedule
85th Regular Session, Agency Submission, Version 1
Automated Budget and Evaluation System of Texas (ABEST)

Date: **8/15/2016**
Time: **2:23:47PM**

Agency Code: **784** Agency: **University of Houston - Downtown**

COMPARISON TO STATEWIDE HUB PROCUREMENT GOALS

A. Fiscal Year 2014 - 2015 HUB Expenditure Information

| Statewide HUB Goals | Procurement Category | % Goal | HUB Expenditures FY 2014 | | | Total Expenditures FY 2014 | | HUB Expenditures FY 2015 | | | Total Expenditures FY 2015 | |
|------------------------|---------------------------|--------|--------------------------|--------|--------------------|----------------------------------|--------|--------------------------|-------|--------------------|----------------------------------|--------------|
| | | | % Actual | Diff | Actual \$ | | % Goal | % Actual | Diff | Actual \$ | | |
| 11.2% | Heavy Construction | 0.0 % | 0.0% | 0.0% | \$0 | \$0 | 0.0 % | 0.0% | 0.0% | \$0 | \$0 | \$0 |
| 21.1% | Building Construction | 25.0 % | 0.3% | -24.7% | \$10,860 | \$3,257,331 | 25.0 % | 25.2% | 0.2% | \$3,442,701 | \$13,653,207 | \$13,653,207 |
| 32.9% | Special Trade | 10.0 % | 33.6% | 23.6% | \$490,140 | \$1,459,739 | 10.0 % | 32.8% | 22.8% | \$842,762 | \$2,570,997 | \$2,570,997 |
| 23.7% | Professional Services | 12.0 % | 35.0% | 23.0% | \$278,274 | \$795,267 | 12.0 % | 23.3% | 11.3% | \$61,155 | \$261,988 | \$261,988 |
| 26.0% | Other Services | 9.0 % | 13.8% | 4.8% | \$1,081,727 | \$7,839,184 | 9.0 % | 7.1% | -1.9% | \$537,989 | \$7,621,708 | \$7,621,708 |
| 21.1% | Commodities | 35.0 % | 38.2% | 3.2% | \$3,219,351 | \$8,422,433 | 35.0 % | 29.3% | -5.7% | \$2,394,627 | \$8,185,649 | \$8,185,649 |
| | Total Expenditures | | 23.3% | | \$5,080,352 | \$21,773,954 | | 22.5% | | \$7,279,234 | \$32,293,549 | |

B. Assessment of Fiscal Year 2014 - 2015 Efforts to Meet HUB Procurement Goals

Attainment:

The agency attained four of the five applicable UHD HUB procurement goals in FY 2014 in the following categories: Special Trade Construction, Professional Services, Other Services and Commodities but in FY 2015 the university attained three UHD HUB goals in the Building Construction, Special Trade and Professional Services categories.

Applicability:

Five of the six categories of eligible expenditures are relevant to a university, although some are more ongoing than others. The Heavy Construction procurement category is not applicable to university expenditures. In any given year the university will have considerable expenditures in both the Commodities and Other Services categories. Expenditures in the Construction and Professional Service categories are generally tied to building projects, which require extraordinary funding and occur intermittently.

Factors Affecting Attainment:

UH-Downtown strives to live up to the spirit of HUB laws by making efforts to engage Black and Hispanic owned businesses. In FY 2014, almost 50% of HUB volume was with Black and Hispanic owned businesses. In FY 2015 Black and Hispanic owned businesses accounted for 51% of the total. A number of large volume businesses (office supplies, computer equipment) have now established third-party arrangements that have enabled agencies to improve their HUB participation rates.

"Good-Faith" Efforts:

The University made the following good faith efforts to comply with statewide HUB procurement goals as stated by Goals 20.13 TAC 20 Section Chap. 20.11 through 20.28.

6.A. Historically Underutilized Business Supporting Schedule
85th Regular Session, Agency Submission, Version 1
Automated Budget and Evaluation System of Texas (ABEST)

Date: **8/15/2016**
Time: **2:23:47PM**

Agency Code: **784** Agency: **University of Houston - Downtown**

- * Sponsored two HUB fairs to promote HUBs to university departments and within community.
- * Held purchasing workshops and training sessions conducted with emphasis on HUB programs.
- * Established exhibits at HUB procurement expos sponsored by the Houston Minority Business Council (HMBC).
- * Attended HUB discussion meetings to keep up with HUB rules and regulations.
- * Cultivated relationships with the new HUB vendors and introduced them to the university community.

University of Houston-Downtown 784
Estimated Funds Outside the Institution's Bill Pattern
2016-17 and 2018-19 Biennia

| | 2016-17 Biennium | | | | 2018-19 Biennium | | | |
|--|------------------------------|------------------------------|------------------------------|-----------------------------|------------------------------|------------------------------|------------------------------|-----------------------------|
| | <u>FY 2016 Revenue</u> | <u>FY 2017 Revenue</u> | <u>Biennium Total</u> | <u>Percent of Total</u> | <u>FY 2018 Revenue</u> | <u>FY 2019 Revenue</u> | <u>Biennium Total</u> | <u>Percent of Total</u> |
| APPROPRIATED SOURCES INSIDE THE BILL PATTERN | | | | | | | | |
| State Appropriations (excluding HEGI & State Paid Fringes) | \$ 24,092,718 | \$ 24,123,221 | \$ 48,215,939 | | \$ 24,009,743 | \$ 24,009,743 | \$ 48,019,486 | |
| Tuition and Fees (net of Discounts and Allowances) | 19,920,545 | 19,941,266 | 39,861,811 | | 19,941,266 | \$ 19,941,266 | 39,882,532 | |
| Endowment and Interest Income | 8,000 | 10,000 | 18,000 | | 10,000 | \$ 10,000 | 20,000 | |
| Sales and Services of Educational Activities (net) | - | - | - | | - | \$ - | - | |
| Sales and Services of Hospitals (net) | - | - | - | | - | \$ - | - | |
| Other Income | - | - | - | | - | - | - | |
| Total | <u>44,021,263</u> | <u>44,074,487</u> | <u>88,095,750</u> | <u>25.1%</u> | <u>43,961,009</u> | <u>43,961,009</u> | <u>87,922,018</u> | <u>24.4%</u> |
| APPROPRIATED SOURCES OUTSIDE THE BILL PATTERN | | | | | | | | |
| State Appropriations (HEGI & State Paid Fringes) | \$ 6,000,000 | \$ 6,549,392 | \$ 12,549,392 | | \$ 6,549,392 | \$ 6,549,392 | \$ 13,098,784 | |
| Higher Education Assistance Funds | 7,835,252 | 11,738,516 | 19,573,768 | | 11,738,516 | \$ 11,738,516 | \$ 23,477,032 | |
| Available University Fund | - | - | - | | - | - | - | |
| State Grants and Contracts | <u>6,703,333</u> | <u>6,719,442</u> | <u>13,422,775</u> | | <u>6,719,442</u> | <u>6,719,442</u> | <u>\$ 13,438,884</u> | |
| Total | <u>20,538,585</u> | <u>25,007,350</u> | <u>45,545,935</u> | <u>13.0%</u> | <u>25,007,350</u> | <u>25,007,350</u> | <u>50,014,700</u> | <u>13.9%</u> |
| NON-APPROPRIATED SOURCES | | | | | | | | |
| Tuition and Fees (net of Discounts and Allowances) | 66,165,841 | 70,654,688 | \$ 136,820,529 | | 70,654,688 | 70,654,688 | \$ 141,309,376 | |
| Federal Grants and Contracts | 30,929,348 | 32,265,326 | 63,194,674 | | 32,265,326 | 32,265,326 | \$ 64,530,652 | |
| State Grants and Contracts | - | - | - | | - | - | - | |
| Local Government Grants and Contracts | - | - | - | | - | - | - | |
| Private Gifts and Grants | 1,350,400 | 1,331,700 | 2,682,100 | | 1,331,700 | 1,331,700 | \$ 2,663,400 | |
| Endowment and Interest Income | 1,653,157 | 1,662,444 | 3,315,601 | | 1,662,444 | 1,662,444 | \$ 3,324,888 | |
| Sales and Services of Educational Activities (net) | 3,744,500 | 2,839,000 | 6,583,500 | | 2,839,000 | 2,839,000 | \$ 5,678,000 | |
| Sales and Services of Hospitals (net) | - | - | - | | - | - | - | |
| Professional Fees (net) | - | - | - | | - | - | - | |
| Auxiliary Enterprises (net) | 2,525,000 | 2,456,000 | 4,981,000 | | 2,456,000 | 2,456,000 | \$ 4,912,000 | |
| Other Income | - | - | - | | - | - | - | |
| Total | <u>106,368,246</u> | <u>111,209,158</u> | <u>217,577,404</u> | <u>61.9%</u> | <u>111,209,158</u> | <u>111,209,158</u> | <u>222,418,316</u> | <u>61.7%</u> |
| TOTAL SOURCES | <u><u>\$ 170,928,094</u></u> | <u><u>\$ 180,290,995</u></u> | <u><u>\$ 351,219,089</u></u> | <u><u>100.0%</u></u> | <u><u>\$ 180,177,517</u></u> | <u><u>\$ 180,177,517</u></u> | <u><u>\$ 360,355,034</u></u> | <u><u>100.0%</u></u> |

6.I. Percent Biennial Base Reduction Options

10 % REDUCTION

85th Regular Session, Agency Submission, Version 1
Automated Budget and Evaluation System of Texas (ABEST)

Date: 8/15/2016
Time: 2:23:48PM

Agency code: 784 Agency name: University of Houston - Downtown

| Item Priority and Name/ Method of Financing | REVENUE LOSS | | | REDUCTION AMOUNT | | | TARGET |
|---|--------------|------------|----------------|------------------|------------------|------------------|--------|
| | 2018 | 2019 | Biennial Total | 2018 | 2019 | Biennial Total | |
| 1 Community Development Project | | | | | | | |
| Category: Programs - Service Reductions (Other) | | | | | | | |
| Item Comment: The Community Development special item is funded entirely with general revenue funds and will be subject to 10 percent reduction. These funds support community-based initiatives. The impact will be fewer service learning opportunities for UHD students. | | | | | | | |
| Strategy: 3-3-1 Community Development Project | | | | | | | |
| <u>General Revenue Funds</u> | | | | | | | |
| 1 General Revenue Fund | \$0 | \$0 | \$0 | \$38,163 | \$38,163 | \$76,326 | |
| General Revenue Funds Total | \$0 | \$0 | \$0 | \$38,163 | \$38,163 | \$76,326 | |
| Item Total | \$0 | \$0 | \$0 | \$38,163 | \$38,163 | \$76,326 | |
| FTE Reductions (From FY 2018 and FY 2019 Base Request) | | | | | | | |
| 2 Institutional Enhancement | | | | | | | |
| Category: Administrative - Operating Expenses | | | | | | | |
| Item Comment: The majority of UHD's non-formula special item funding comes through the Institutional Enhancement item, an item that all institutions receive and money that is universally treated as general use operating dollars, not unlike Instruction & Operations formula dollars. If the 10 percent GR-related base budget reduction is enacted UHD would have \$439,378 less in the upcoming biennium to meet basic operating needs. Needed new faculty lines could not be added, the hiring of critical students support staff positions would be put off, class sizes could increase and fewer courses would be put on the schedule. The overall effect would be to diminish the university experience for UHD students in ways that would reduce their likelihood of earning a degree, or earning a degree in a timely manner. | | | | | | | |
| Strategy: 3-4-1 Institutional Enhancement | | | | | | | |
| <u>General Revenue Funds</u> | | | | | | | |
| 1 General Revenue Fund | \$0 | \$0 | \$0 | \$219,689 | \$219,689 | \$439,378 | |
| General Revenue Funds Total | \$0 | \$0 | \$0 | \$219,689 | \$219,689 | \$439,378 | |
| Item Total | \$0 | \$0 | \$0 | \$219,689 | \$219,689 | \$439,378 | |

6.I. Percent Biennial Base Reduction Options

10 % REDUCTION

85th Regular Session, Agency Submission, Version 1
Automated Budget and Evaluation System of Texas (ABEST)

Date: 8/15/2016
Time: 2:23:48PM

Agency code: 784 Agency name: University of Houston - Downtown

| | REVENUE LOSS | | | REDUCTION AMOUNT | | | TARGET |
|---|---|------|----------------|------------------|-----------|----------------|-----------|
| Item Priority and Name/ Method of Financing | 2018 | 2019 | Biennial Total | 2018 | 2019 | Biennial Total | |
| FTE Reductions (From FY 2018 and FY 2019 Base Request) | | | | | | | |
| 3 Worker's Compensation Insurance | | | | | | | |
| Category: | Administrative - Operating Expenses | | | | | | |
| Item Comment: | The Workers Compensation strategy deals with the costs incurred when an employee is injured on the job. | | | | | | |
| Strategy: 1-1-4 Workers' Compensation Insurance | | | | | | | |
| General Revenue Funds | | | | | | | |
| 1 General Revenue Fund | \$0 | \$0 | \$0 | \$14,496 | \$14,496 | \$28,992 | |
| General Revenue Funds Total | \$0 | \$0 | \$0 | \$14,496 | \$14,496 | \$28,992 | |
| Item Total | \$0 | \$0 | \$0 | \$14,496 | \$14,496 | \$28,992 | |
| FTE Reductions (From FY 2018 and FY 2019 Base Request) | | | | | | | |
| AGENCY TOTALS | | | | | | | |
| General Revenue Total | | | | \$272,348 | \$272,348 | \$544,696 | \$544,696 |
| Agency Grand Total | \$0 | \$0 | \$0 | \$272,348 | \$272,348 | \$544,696 | |
| Difference, Options Total Less Target | | | | | | | |
| Agency FTE Reductions (From FY 2018 and FY 2019 Base Request) | | | | | | | |

85th Regular Session, Agency Submission, Version 1
Automated Budget and Evaluation System of Texas (ABEST)

| 784 University of Houston - Downtown | | | | | |
|---|-------------------|-------------------|-------------------|-------------------|-------------------|
| | Act 2015 | Act 2016 | Bud 2017 | Est 2018 | Est 2019 |
| Gross Tuition | | | | | |
| Gross Resident Tuition | 16,837,391 | 15,797,904 | 16,629,372 | 17,019,024 | 17,419,322 |
| Gross Non-Resident Tuition | 3,759,337 | 4,063,999 | 4,277,894 | 4,371,650 | 4,467,692 |
| Gross Tuition | 20,596,728 | 19,861,903 | 20,907,266 | 21,390,674 | 21,887,014 |
| Less: Resident Waivers and Exemptions (excludes Hazlewood) | (111,768) | (82,927) | (85,000) | (86,700) | (88,434) |
| Less: Non-Resident Waivers and Exemptions | (533,821) | (540,492) | (546,000) | (556,920) | (568,058) |
| Less: Hazlewood Exemptions | (283,833) | (325,520) | (335,000) | (341,700) | (348,534) |
| Less: Board Authorized Tuition Increases (TX. Educ. Code Ann. Sec. 54.008) | (509,896) | (730,485) | (951,073) | (998,627) | (1,048,558) |
| Less: Tuition increases charged to doctoral students with hours in excess of 100 (TX. Educ. Code Ann. Sec. 54.012) | 0 | 0 | 0 | 0 | 0 |
| Less: Tuition increases charged to undergraduate students with excessive hours above degree requirements. (TX. Educ. Code Ann. Sec. 61.0595) | (441,545) | (313,306) | (369,856) | (369,856) | (369,856) |
| Less: Tuition rebates for certain undergraduates (TX. Educ. Code Ann. Sec. 54.0065) | 0 | 0 | 0 | 0 | 0 |
| Plus: Tuition waived for Students 55 Years or Older (TX. Educ. Code Ann. Sec. 54.013) | 1,455 | 0 | 0 | 0 | 0 |
| Less: Tuition for repeated or excessive hours (TX. Educ. Code Ann. Sec. 54.014) | (389,773) | (276,613) | (326,540) | (326,540) | (326,540) |
| Plus: Tuition waived for Texas Grant Recipients (TX. Educ. Code Ann. Sec. 56.307) | 0 | 0 | 0 | 0 | 0 |
| Subtotal | 18,327,547 | 17,592,560 | 18,293,797 | 18,710,331 | 19,137,034 |
| Less: Transfer of funds for Texas Public Education Grants Program (Tex. Educ. Code Ann. Sec. 56c) and for Emergency Loans (Tex. Educ. Code Ann. Sec. 56d) | (2,312,720) | (2,242,515) | (2,175,324) | (2,218,830) | (2,263,207) |
| Less: Transfer of Funds (2%) for Physician/Dental Loans (Medical Schools) | 0 | 0 | 0 | 0 | 0 |
| Less: Statutory Tuition (Tx. Educ. Code Ann. Sec. 54.051) Set Aside for Doctoral Incentive Loan Repayment Program (Tx. Educ. Code Ann. Sec. 56.095) | 0 | 0 | 0 | 0 | 0 |
| Less: Other Authorized Deduction | | | | | |
| Net Tuition | 16,014,827 | 15,350,045 | 16,118,473 | 16,491,501 | 16,873,827 |

85th Regular Session, Agency Submission, Version 1
Automated Budget and Evaluation System of Texas (ABEST)

| 784 University of Houston - Downtown | | | | | |
|--|-------------------|-------------------|-------------------|-------------------|-------------------|
| | Act 2015 | Act 2016 | Bud 2017 | Est 2018 | Est 2019 |
| Student Teaching Fees | 0 | 0 | 0 | 0 | 0 |
| Special Course Fees | 0 | 0 | 0 | 0 | 0 |
| Laboratory Fees | 76,866 | 0 | 0 | 0 | 0 |
| Subtotal, Tuition and Fees (Formula Amounts for Health-Related Institutions) | 16,091,693 | 15,350,045 | 16,118,473 | 16,491,501 | 16,873,827 |
| OTHER INCOME | | | | | |
| Interest on General Funds: | | | | | |
| Local Funds in State Treasury | 6,417 | 10,043 | 10,000 | 10,000 | 10,000 |
| Funds in Local Depositories, e.g., local amounts | 0 | 0 | 0 | 0 | 0 |
| Other Income (Itemize) | | | | | |
| Adjustment to Expended | (566,000) | 0 | 0 | 0 | 0 |
| Subtotal, Other Income | (559,583) | 10,043 | 10,000 | 10,000 | 10,000 |
| Subtotal, Other Educational and General Income | 15,532,110 | 15,360,088 | 16,128,473 | 16,501,501 | 16,883,827 |
| Less: O.A.S.I. Applicable to Educational and General | (937,884) | (887,462) | (909,999) | (937,299) | (965,418) |
| Local Funds Payrolls | | | | | |
| Less: Teachers Retirement System and ORP | (849,536) | (803,800) | (824,150) | (848,875) | (874,341) |
| Proportionality for Educational and General Funds | | | | | |
| Less: Staff Group Insurance Premiums | (1,618,750) | (1,651,875) | (1,685,000) | (1,802,950) | (1,929,157) |
| Total, Other Educational and General Income (Formula Amounts for General Academic Institutions) | 12,125,940 | 12,016,951 | 12,709,324 | 12,912,377 | 13,114,911 |
| Reconciliation to Summary of Request for FY 2015-2017 | | | | | |
| Plus: Transfer of Funds for Texas Public Education Grants Program and Physician Loans | 2,312,720 | 2,242,515 | 2,175,324 | 2,218,830 | 2,263,207 |
| Plus: Transfer of Funds 2% for Physician/Dental Loans (Medical Schools) | 0 | 0 | 0 | 0 | 0 |
| Plus: Transfer of Funds for Cancellation of Student Loans of Physicians | 0 | 0 | 0 | 0 | 0 |
| Plus: Organized Activities | 0 | 0 | 0 | 0 | 0 |
| Plus: Staff Group Insurance Premiums | 1,618,750 | 1,651,875 | 1,685,000 | 1,802,950 | 1,929,157 |
| Plus: Board-authorized Tuition Income | 509,896 | 730,485 | 951,073 | 998,627 | 1,048,558 |
| Plus: Tuition Increases Charged to Doctoral Students with Hours in Excess of 100 | 0 | 0 | 0 | 0 | 0 |

Schedule 1A: Other Educational and General Income

8/15/2016 2:23:49PM

85th Regular Session, Agency Submission, Version 1
Automated Budget and Evaluation System of Texas (ABEST)

| 784 University of Houston - Downtown | | | | | |
|---|-------------------|-------------------|-------------------|-------------------|-------------------|
| | Act 2015 | Act 2016 | Bud 2017 | Est 2018 | Est 2019 |
| Plus: Tuition Increases Charged to Undergraduate Students with Excessive Hours above Degree Requirements (TX. Educ. Code Ann. Sec. 61.0595) | 441,545 | 313,306 | 369,856 | 369,856 | 369,856 |
| Plus: Tuition rebates for certain undergraduates (TX Educ.Code Ann. Sec. 54.0065) | 0 | 0 | 0 | 0 | 0 |
| Plus: Tuition for repeated or excessive hours (TX. Educ. Code Ann. Sec. 54.014) | 389,773 | 276,613 | 326,540 | 326,540 | 326,540 |
| Less: Tuition Waived for Students 55 Years or Older | (1,455) | 0 | 0 | 0 | 0 |
| Less: Tuition Waived for Texas Grant Recipients | 0 | 0 | 0 | 0 | 0 |
| Total, Other Educational and General Income Reported on Summary of Request | 17,397,169 | 17,231,745 | 18,217,117 | 18,629,180 | 19,052,229 |

Schedule 2: Selected Educational, General and Other Funds

8/15/2016 2:23:49PM

85th Regular Session, Agency Submission, Version 1
Automated Budget and Evaluation System of Texas (ABEST)

| 784 University of Houston - Downtown | | | | | |
|---|-------------------|-------------------|-------------------|-------------------|-------------------|
| | Act 2015 | Act 2016 | Bud 2017 | Est 2018 | Est 2019 |
| General Revenue Transfers | | | | | |
| Transfer from Coordinating Board for Advanced Research Program | 0 | 0 | 0 | 0 | 0 |
| Transfer from Coordinating Board for Texas College Work Study Program (2015, 2016, 2017) | 90,204 | 95,550 | 90,000 | 0 | 0 |
| Transfer from Coordinating Board for Professional Nursing Shortage Reduction Program | 0 | 0 | 0 | 0 | 0 |
| Transfer of GR Group Insurance Premium from Comptroller (UT and TAMU Components only) | 0 | 0 | 0 | 0 | 0 |
| Less: Transfer to Other Institutions | 0 | 0 | 0 | 0 | 0 |
| Less: Transfer to Department of Health, Disproportionate Share - State-Owned Hospitals (2015, 2016, 2017) | 0 | 0 | 0 | 0 | 0 |
| Other (Itemize) | | | | | |
| Other: Fifth Year Accounting Scholarship | 6,000 | 3,000 | 6,000 | 0 | 0 |
| Texas Grants | 6,703,333 | 6,587,688 | 6,719,442 | 0 | 0 |
| B-on-Time Program | 524,045 | 144,845 | 50,000 | 0 | 0 |
| Less: Transfer to System Administration | 0 | 0 | 0 | 0 | 0 |
| Subtotal, General Revenue Transfers | 7,323,582 | 6,831,083 | 6,865,442 | 0 | 0 |
| General Revenue HEF for Operating Expenses | 7,435,238 | 7,835,252 | 11,738,516 | 11,738,516 | 11,738,516 |
| Transfer from Available University Funds (UT, A&M and Prairie View A&M Only) | 0 | 0 | 0 | 0 | 0 |
| Other Additions (Itemize) | | | | | |
| Increase Capital Projects - Educational and General Funds | 0 | 0 | 0 | 0 | 0 |
| Transfer from Department of Health, Disproportionate Share - State-owned Hospitals (2015, 2016, 2017) | 0 | 0 | 0 | 0 | 0 |
| Transfers from Other Funds, e.g., Designated funds transferred for educational and general activities (Itemize) | 0 | 0 | 0 | 0 | 0 |
| Transfer from Coordinating Board for Incentive Funding | 0 | 0 | 0 | 0 | 0 |
| Other (Itemize) | | | | | |
| Gross Designated Tuition (Sec. 54.0513) | 43,953,287 | 48,262,390 | 50,559,565 | 51,760,429 | 52,994,795 |
| Indirect Cost Recovery (Sec. 145.001(d)) | 102,588 | 83,630 | 189,540 | 130,000 | 130,000 |
| Correctional Managed Care Contracts | 0 | 0 | 0 | 0 | 0 |

Schedule 3A: Staff Group Insurance Data Elements (ERS)
85th Regular Session, Agency Submission, Version 1
Automated Budget and Evaluation System of Texas (ABEST)

8/15/2016 2:23:49PM

784 University of Houston - Downtown

| | E&G Enrollment | GR Enrollment | GR-D/OEGI Enrollment | Total E&G (Check) | Local Non-E&G |
|----------------------------------|---------------------------|----------------------|-----------------------------|------------------------------|--------------------------|
| GR & GR-D Percentages | | | | | |
| GR % | 65.66% | | | | |
| GR-D/Other % | 34.34% | | | | |
| Total Percentage | 100.00% | | | | |
| FULL TIME ACTIVES | | | | | |
| 1a Employee Only | 276 | 181 | 95 | 276 | 264 |
| 2a Employee and Children | 60 | 39 | 21 | 60 | 68 |
| 3a Employee and Spouse | 51 | 33 | 18 | 51 | 37 |
| 4a Employee and Family | 52 | 34 | 18 | 52 | 46 |
| 5a Eligible, Opt Out | 7 | 5 | 2 | 7 | 3 |
| 6a Eligible, Not Enrolled | 16 | 11 | 5 | 16 | 21 |
| Total for This Section | 462 | 303 | 159 | 462 | 439 |
| PART TIME ACTIVES | | | | | |
| 1b Employee Only | 5 | 3 | 2 | 5 | 18 |
| 2b Employee and Children | 0 | 0 | 0 | 0 | 0 |
| 3b Employee and Spouse | 0 | 0 | 0 | 0 | 1 |
| 4b Employee and Family | 2 | 1 | 1 | 2 | 1 |
| 5b Eligible, Opt Out | 0 | 0 | 0 | 0 | 0 |
| 6b Eligible, Not Enrolled | 0 | 0 | 0 | 0 | 38 |
| Total for This Section | 7 | 4 | 3 | 7 | 58 |
| Total Active Enrollment | 469 | 307 | 162 | 469 | 497 |

784 University of Houston - Downtown

| | E&G Enrollment | GR Enrollment | GR-D/OEGI Enrollment | Total E&G (Check) | Local Non-E&G |
|-----------------------------------|---------------------------|----------------------|-----------------------------|------------------------------|--------------------------|
| FULL TIME RETIREES by ERS | | | | | |
| 1c Employee Only | 0 | 0 | 0 | 0 | 0 |
| 2c Employee and Children | 0 | 0 | 0 | 0 | 0 |
| 3c Employee and Spouse | 0 | 0 | 0 | 0 | 0 |
| 4c Employee and Family | 0 | 0 | 0 | 0 | 0 |
| 5c Eligible, Opt Out | 0 | 0 | 0 | 0 | 0 |
| 6c Eligible, Not Enrolled | 0 | 0 | 0 | 0 | 0 |
| Total for This Section | 0 | 0 | 0 | 0 | 0 |
| PART TIME RETIREES by ERS | | | | | |
| 1d Employee Only | 0 | 0 | 0 | 0 | 0 |
| 2d Employee and Children | 0 | 0 | 0 | 0 | 0 |
| 3d Employee and Spouse | 0 | 0 | 0 | 0 | 0 |
| 4d Employee and Family | 0 | 0 | 0 | 0 | 0 |
| 5d Eligible, Opt Out | 0 | 0 | 0 | 0 | 0 |
| 6d Eligible, Not Enrolled | 0 | 0 | 0 | 0 | 0 |
| Total for This Section | 0 | 0 | 0 | 0 | 0 |
| Total Retirees Enrollment | 0 | 0 | 0 | 0 | 0 |
| TOTAL FULL TIME ENROLLMENT | | | | | |
| 1e Employee Only | 276 | 181 | 95 | 276 | 264 |
| 2e Employee and Children | 60 | 39 | 21 | 60 | 68 |
| 3e Employee and Spouse | 51 | 33 | 18 | 51 | 37 |
| 4e Employee and Family | 52 | 34 | 18 | 52 | 46 |
| 5e Eligible, Opt Out | 7 | 5 | 2 | 7 | 3 |
| 6e Eligible, Not Enrolled | 16 | 11 | 5 | 16 | 21 |
| Total for This Section | 462 | 303 | 159 | 462 | 439 |

784 University of Houston - Downtown

| | E&G Enrollment | GR Enrollment | GR-D/OEGI Enrollment | Total E&G (Check) | Local Non-E&G |
|-------------------------------|---------------------------|----------------------|---------------------------------|------------------------------|--------------------------|
| TOTAL ENROLLMENT | | | | | |
| 1f Employee Only | 281 | 184 | 97 | 281 | 282 |
| 2f Employee and Children | 60 | 39 | 21 | 60 | 68 |
| 3f Employee and Spouse | 51 | 33 | 18 | 51 | 38 |
| 4f Employee and Family | 54 | 35 | 19 | 54 | 47 |
| 5f Eligible, Opt Out | 7 | 5 | 2 | 7 | 3 |
| 6f Eligible, Not Enrolled | 16 | 11 | 5 | 16 | 59 |
| Total for This Section | 469 | 307 | 162 | 469 | 497 |

Schedule 4: Computation of OASI
85th Regular Session, Agency Submission, Version 1
Automated Budget and Evaluation System of Texas (ABEST)

Agency 784 University of Houston - Downtown

| Proportionality Percentage Based on Comptroller Accounting Policy Statement #011, Exhibit 2 | 2015 | | 2016 | | 2017 | | 2018 | | 2019 | |
|---|-----------------------|-------------------------------|-----------------------|-------------------------------|-----------------------|-------------------------------|-----------------------|-------------------------------|-----------------------|-------------------------------|
| | <u>% to Total</u> | <u>Allocation of OASI</u> | <u>% to Total</u> | <u>Allocation of OASI</u> | <u>% to Total</u> | <u>Allocation of OASI</u> | <u>% to Total</u> | <u>Allocation of OASI</u> | <u>% to Total</u> | <u>Allocation of OASI</u> |
| General Revenue (% to Total) | 62.7637 | \$1,580,853 | 65.6604 | \$1,696,907 | 65.6604 | \$1,740,001 | 65.6604 | \$1,792,201 | 65.6604 | \$1,845,967 |
| Other Educational and General Funds (% to Total) | 37.2363 | \$937,884 | 34.3396 | \$887,462 | 34.3396 | \$909,999 | 34.3396 | \$937,299 | 34.3396 | \$965,418 |
| Health-Related Institutions Patient Income (% to Total) | 0.0000 | \$0 | 0.0000 | \$0 | 0.0000 | \$0 | 0.0000 | \$0 | 0.0000 | \$0 |
| Grand Total, OASI (100%) | 100.0000 | \$2,518,737 | 100.0000 | \$2,584,369 | 100.0000 | \$2,650,000 | 100.0000 | \$2,729,500 | 100.0000 | \$2,811,385 |

Schedule 5: Calculation of Retirement Proportionality and ORP Differential

8/15/2016 2:23:50PM

85th Regular Session, Agency Submission, Version 1

Automated Budget and Evaluation System of Texas (ABEST)

784 University of Houston - Downtown

| Description | Act 2015 | Act 2016 | Bud 2017 | Est 2018 | Est 2019 |
|--|------------|------------|------------|------------|------------|
| Proportionality Amounts | | | | | |
| Gross Educational and General Payroll - Subject To TRS Retirement | 18,326,853 | 18,795,780 | 19,264,706 | 19,842,647 | 20,437,926 |
| Employer Contribution to TRS Retirement Programs | 1,246,226 | 1,278,113 | 1,310,000 | 1,349,300 | 1,389,779 |
| Gross Educational and General Payroll - Subject To ORP Retirement | 15,685,561 | 16,100,357 | 16,515,152 | 17,010,607 | 17,520,925 |
| Employer Contribution to ORP Retirement Programs | 1,035,247 | 1,062,624 | 1,090,000 | 1,122,700 | 1,156,381 |
| Proportionality Percentage | | | | | |
| General Revenue | 62.7637 % | 65.6604 % | 65.6604 % | 65.6604 % | 65.6604 % |
| Other Educational and General Income | 37.2363 % | 34.3396 % | 34.3396 % | 34.3396 % | 34.3396 % |
| Health-related Institutions Patient Income | 0.0000 % | 0.0000 % | 0.0000 % | 0.0000 % | 0.0000 % |
| Proportional Contribution | | | | | |
| Other Educational and General Proportional Contribution (Other E&G percentage x Total Employer Contribution to Retirement Programs) | 849,536 | 803,800 | 824,150 | 848,875 | 874,341 |
| HRI Patient Income Proportional Contribution (HRI Patient Income percentage x Total Employer Contribution To Retirement Programs) | 0 | 0 | 0 | 0 | 0 |
| Differential | | | | | |
| Differential Percentage | 1.9000 % | 1.9000 % | 1.9000 % | 1.9000 % | 1.9000 % |
| Gross Payroll Subject to Differential - Optional Retirement Program | 5,653,947 | 5,563,816 | 5,473,684 | 5,637,895 | 5,807,032 |
| Total Differential | 107,425 | 105,713 | 104,000 | 107,120 | 110,334 |

Schedule 6: Constitutional Capital Funding
85th Regular Session, Agency Submission, Version 1
Automated Budget and Evaluation System of Texas (ABEST)

8/15/2016 2:23:51PM

| 784 University of Houston - Downtown | | | | | |
|---|-----------------|-----------------|-----------------|-----------------|-----------------|
| Activity | Act 2015 | Act 2016 | Bud 2017 | Est 2018 | Est 2019 |
| A. PUF Bond Proceeds Allocation | 0 | 0 | 0 | 0 | 0 |
| Project Allocation | | | | | |
| Library Acquisitions | 0 | 0 | 0 | 0 | 0 |
| Construction, Repairs and Renovations | 0 | 0 | 0 | 0 | 0 |
| Furnishings & Equipment | 0 | 0 | 0 | 0 | 0 |
| Computer Equipment & Infrastructure | 0 | 0 | 0 | 0 | 0 |
| Reserve for Future Consideration | 0 | 0 | 0 | 0 | 0 |
| Other (Itemize) | | | | | |
| B. HEF General Revenue Allocation | 8,644,873 | 10,295,154 | 11,738,516 | 11,738,516 | 11,738,516 |
| Project Allocation | | | | | |
| Library Acquisitions | 2,299,314 | 2,200,000 | 2,300,000 | 2,300,000 | 2,400,000 |
| Construction, Repairs and Renovations | 3,412,001 | 4,458,404 | 2,632,516 | 2,632,516 | 2,757,516 |
| Furnishings & Equipment | 644,781 | 521,750 | 926,000 | 926,000 | 926,000 |
| Computer Equipment & Infrastructure | 2,288,777 | 3,115,000 | 4,180,000 | 3,380,000 | 3,155,000 |
| Reserve for Future Consideration | 0 | 0 | 0 | 0 | 0 |
| HEF for Debt Service | 0 | 0 | 1,700,000 | 2,500,000 | 2,500,000 |
| Other (Itemize) | | | | | |

Schedule 7: Personnel
85th Regular Session, Agency Submission, Version 1
Automated Budget and Evaluation System of Texas (ABEST)

Date: 8/15/2016
Time: 2:23:51PM

Agency code: **784** Agency name: **University of Houston - Downtown**

| | Actual 2015 | Actual 2016 | Budgeted 2017 | Estimated 2018 | Estimated 2019 |
|---|----------------|----------------|------------------|-------------------|-------------------|
| Part A. | | | | | |
| FTE Postions | | | | | |
| Directly Appropriated Funds (Bill Pattern) | | | | | |
| Educational and General Funds Faculty Employees | 256.7 | 281.7 | 270.9 | 273.9 | 276.9 |
| Educational and General Funds Non-Faculty Employees | 196.4 | 209.9 | 235.5 | 238.5 | 241.5 |
| Subtotal, Directly Appropriated Funds | 453.1 | 491.6 | 506.4 | 512.4 | 518.4 |
| Non Appropriated Funds Employees | 610.0 | 592.4 | 818.4 | 827.4 | 836.4 |
| Subtotal, Other Funds & Non-Appropriated | 610.0 | 592.4 | 818.4 | 827.4 | 836.4 |
| GRAND TOTAL | 1,063.1 | 1,084.0 | 1,324.8 | 1,339.8 | 1,354.8 |

Part B.
Personnel Headcount

| | | | | | |
|---|----------------|----------------|----------------|----------------|----------------|
| Directly Appropriated Funds (Bill Pattern) | | | | | |
| Educational and General Funds Faculty Employees | 243.0 | 276.0 | 265.0 | 268.0 | 271.0 |
| Educational and General Funds Non-Faculty Employees | 185.0 | 205.0 | 231.0 | 234.0 | 237.0 |
| Subtotal, Directly Appropriated Funds | 428.0 | 481.0 | 496.0 | 502.0 | 508.0 |
| Non Appropriated Funds Employees | 930.0 | 1,009.0 | 1,326.0 | 1,340.0 | 1,354.0 |
| Subtotal, Non-Appropriated | 930.0 | 1,009.0 | 1,326.0 | 1,340.0 | 1,354.0 |
| GRAND TOTAL | 1,358.0 | 1,490.0 | 1,822.0 | 1,842.0 | 1,862.0 |

Schedule 7: Personnel
85th Regular Session, Agency Submission, Version 1
Automated Budget and Evaluation System of Texas (ABEST)

Date: 8/15/2016
Time: 2:23:51PM

Agency code: **784** Agency name: **University of Houston - Downtown**

| | Actual 2015 | Actual 2016 | Budgeted 2017 | Estimated 2018 | Estimated 2019 |
|---|------------------------|------------------------|--------------------------|---------------------------|---------------------------|
| PART C. | | | | | |
| Salaries | | | | | |
| Directly Appropriated Funds (Bill Pattern) | | | | | |
| Educational and General Funds Faculty Employees | \$23,287,998 | \$24,363,283 | \$24,518,048 | \$25,418,590 | \$26,346,148 |
| Educational and General Funds Non-Faculty Employees | \$11,053,392 | \$12,216,793 | \$13,109,398 | \$13,667,680 | \$14,242,711 |
| Subtotal, Directly Appropriated Funds | \$34,341,390 | \$36,580,076 | \$37,627,446 | \$39,086,270 | \$40,588,859 |
| Non Appropriated Funds Employees | \$31,805,271 | \$33,252,581 | \$37,971,325 | \$38,575,465 | \$40,227,729 |
| Subtotal, Non-Appropriated | \$31,805,271 | \$33,252,581 | \$37,971,325 | \$38,575,465 | \$40,227,729 |
| GRAND TOTAL | \$66,146,661 | \$69,832,657 | \$75,598,771 | \$77,661,735 | \$80,816,588 |

Schedule 8B: Tuition Revenue Bond Issuance History

8/15/2016 2:23:51PM

85th Regular Session, Agency Submission, Version 1
Automated Budget and Evaluation System of Texas (ABEST)

| 784 University of Houston - Downtown | | | | | | |
|---|---------------------------------|--------------------------|----------------------------|---|---|---|
| Authorization Date | Authorization Amount | Issuance Date | Issuance Amount | Authorized Amount Outstanding as of 08/31/2016 | Proposed Issuance Date for Outstanding Authorization | Proposed Issuance Amount for Outstanding Authorization |
| 1993 | \$22,400,000 | Apr 18 1995 | \$22,400,000 | | | |
| | | <i>Subtotal</i> | \$22,400,000 | \$0 | | |
| 1997 | \$7,500,000 | Feb 10 1999 | \$7,500,000 | | | |
| | | <i>Subtotal</i> | \$7,500,000 | \$0 | | |
| 2001 | \$18,232,500 | Oct 9 2002 | \$18,232,000 | | | |
| | | <i>Subtotal</i> | \$18,232,000 | \$500 | | |
| 2006 | \$31,626,000 | Feb 15 2006 | \$31,626,000 | | | |
| | | <i>Subtotal</i> | \$31,626,000 | \$0 | | |
| 2016 | \$60,000,000 | Jan 31 2017 | \$60,000,000 | | | |
| | | <i>Subtotal</i> | \$60,000,000 | \$0 | | |

784 University of Houston - Downtown

Special Item: 1 **Community Development**

(1) Year Special Item: 2000
Original Appropriations: \$300,000

(2) Mission of Special Item:

These funds serve as seed money for community-based efforts to revitalize two separate economically depressed north side neighborhoods - the predominately African-American Acres Homes subdivision and the largely Hispanic area known as the near north side. Projects in both areas have their own boards that oversee a variety of economic development and community enhancement efforts. These boards, which are required to provide periodic status reports to the university leadership, operate with a high degree of autonomy.

(3) (a) Major Accomplishments to Date:

The bulk of the funds directly support youth leadership and development programs, summer educational enrichment programs for at-risk children, supplemental nutrition, women's empowerment, and other vital community needs.

The service learning allocation made to UHD supports community needs in a more indirect way, providing grants to faculty members who build community engagements/service learning into their curricula. Four examples of these grants are projects that UHD students engaged in at Crockett Elementary School, Freddie's Hope Rescue Ranch, Kegan State Jail, and Burbank Middle School. Last year, 133 UHD students spent a total of 1,347 hours in these community centers addressing such issues as prison literacy, STEM education, and animal health.

(3) (b) Major Accomplishments Expected During the Next 2 Years:

Funds received for the FY2018/19 biennium will be used for much the same purpose as the funds received in previous biennia. The University is grateful that a portion of the funding provided through this item is made available to support its efforts in service learning.

(4) Funding Source Prior to Receiving Special Item Funding:

Unfunded

(5) Formula Funding:

N

(6) Startup Funding:

N

(7) Transition Funding:

N

784 University of Houston - Downtown

(8) Non-general Revenue Sources of Funding:

None

(9) Consequences of Not Funding:

An opportunity to lift these economically depressed neighborhoods would be lost, as would the opportunity to provide community development service learning opportunities to UHD Students.

784 University of Houston - Downtown

Special Item: 2 **Institutional Enhancement**

(1) Year Special Item: 2000
Original Appropriations: \$2,292,477

(2) Mission of Special Item:

This item was first created by the 76th Legislature and has been adjusted numerous times over the years. While the basis for this funding ties back to discontinued special items that were rolled up into a single line, the fact is that Institutional enhancement funds have become de facto operating dollars for state universities, comparable in terms of use to what is received through the Operations Support formula.

(3) (a) Major Accomplishments to Date:

The Institutional Enhancement (I/E) item is an anomaly, as unlike traditional special items it is not provided to support some very specific need. Rather, I/E funds support general operations. Given this, it is a challenge to identify 'major accomplishments' that can be tied to this funding. The major accomplishment is that the funding helps UHD cover general operating expenses.

(3) (b) Major Accomplishments Expected During the Next 2 Years:

Funds received for the FY2018/19 biennium will be used for much the same purpose as I/E funds received in previous biennia - to address general operating needs.

(4) Funding Source Prior to Receiving Special Item Funding:

The Academic Support Lab and CEC were separately funded special items prior to the establishment of Institutional Enhancement. The other items were either unfunded or underfunded.

(5) Formula Funding:

N

(6) Startup Funding:

N

(7) Transition Funding:

N

(8) Non-general Revenue Sources of Funding:

None

(9) Consequences of Not Funding:

As with most institutions of higher ed in Texas, UHD uses Institutional Enhancement funds to support many of its core operations. Losing this funding would have the effect of an across-the-board decrease in state support.

784 University of Houston - Downtown

Special Item: 3 **Center for Urban Agriculture & Sustainability**

(1) Year Special Item: 2018
Original Appropriations: \$375,000

(2) Mission of Special Item:

These funds will be used to expand its Center for Urban Agriculture & Sustainability (CUAS) through the construction of a greenhouse and outside agricultural laboratory. UH's CUAS will address goals – increasing urban food production, becoming a leader in sustainable technologies and business, reducing our global carbon footprint, and creating stable urban ecosystems.

(3) (a) Major Accomplishments to Date:

Recently, we built gardens and infrastructure (solar irrigation systems). Food from these gardens is distributed by non-profits to the homeless. Next year, students will work on research projects (organic pesticides, variety trials for urban environments). Continuing education will support demand for local food and a sustainable Houston.

(3) (b) Major Accomplishments Expected During the Next 2 Years:

Continuing education will support demand for local food and a sustainable Houston.

(4) Funding Source Prior to Receiving Special Item Funding:

In 2015 CUAS utilized institutional and private funding from WCA waste management company. In 2016, USDA NIFA awarded UH a \$250,000 grant for development of the CUAS.

(5) Formula Funding:
N

(6) Startup Funding:
N

(7) Transition Funding:
N

(8) Non-general Revenue Sources of Funding:

FY2015 institutional and private funding. FY2016 federal funding.

(9) Consequences of Not Funding:

Seek alternate funding.

784 University of Houston - Downtown

Special Item: 4 **Internships - A Pathway to Career Success**

(1) Year Special Item: 2018
Original Appropriations: \$300,000

(2) Mission of Special Item:

These funds will be used to provide summer stipends for students pursuing internships in their junior and senior year with non-profit organizations, which are hard-pressed to attract students due to their inability to provide paid internships. This item recognizes that internships are among the most impactful in creating a smooth transition from the classroom to careers and will extend our existing initiatives of community engagement. This item also recognizes that minority students, like those served by UHD, have long been underrepresented when it comes to participation in internship programs as low-income students, taking an unpaid internship is often not an option due to their financial obligations.

(3) (a) Major Accomplishments to Date:

UHD was designated the 2012 US President's Higher Education Community Service Honor Roll with Distinction and the 2015 Community Engagement Classification from The Carnegie Foundation.

(3) (b) Major Accomplishments Expected During the Next 2 Years:

UHD plans to build on its strength in community engagement by doubling the number of internships available to UHD students.

(4) Funding Source Prior to Receiving Special Item Funding:

In spring 2015, the Center for Community Engagement and Service Learning was established with institutional funding and private philanthropy.

(5) Formula Funding:

N

(6) Startup Funding:

N

(7) Transition Funding:

N

(8) Non-general Revenue Sources of Funding:

Institutional and private funding.

(9) Consequences of Not Funding:

Seek alternate funding.